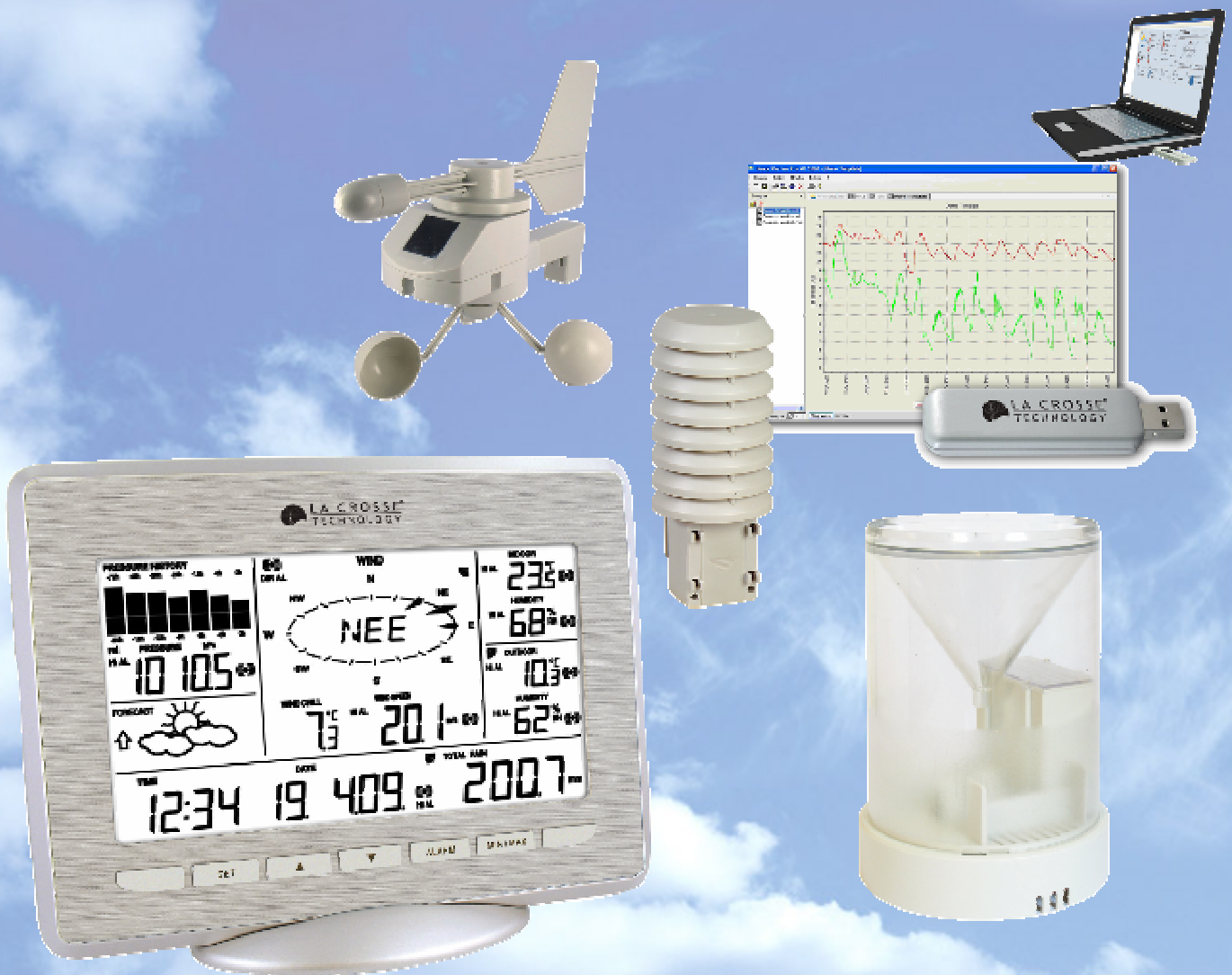


WS 2800

New generation of Professionnal
Weather Station !



Transmission 100% wireless
Wireless PC connection, via USB stick
Large LCD screen and solar panel sensors
Instant Transmission 868 Mhz

RETAIL PRICE :
299 Euros



FEATURES :



- Time display in 12/24 hour time format
- Automatic time and date (PC time) update from USB transceiver if connected



- Calendar display (date, month, year)
- Time alarm function
- Weather forecast with 3 weather icons (sunny, cloudy, and rainy) with weather tendency indicator



- Temperature display in °C/°F
- Humidity display in RH%
- Dew point display in °C/°F
- Wind chill display in °C / °F



- MIN/MAX values of indoor/outdoor temperature, indoor/outdoor humidity, dew point display with time and date of recording



- Relative air pressure reading in inHg/hPa



- 24h/72h history graph selectable



- Wind speed displayed in km/h, mph, m/s, knots, and Beaufort scale



- Wind speed & direction with LCD compass display (16 steps/ 22.5 degree)



- MAX records for wind gust with time & date of recording



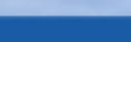
- Rainfall display in mm/inch



- Rainfall data for total rain, last hour, last 24h, last week, last month



- Weather alarm modes: temperature, humidity, wind speed, wind direction, air pressure and storm warning



- LCD contrast setting

- Storage of 1750 sets of weather records with a recording interval of 1 minute to 24 hours



Weather history PC software:

- Stores collected weather data, creates graphs, synchronizes time/date, updates user settings and sets weather alarms
- Works with [Windows XP, Vista, Windows 7](#)

Wireless USB transceiver:

- USB transceiver plugs into your PC to transfer and share the collected weather data from your weather display with your PC
- [Wireless transfer](#) of weather measurements from weather display to PC

Wireless solar-powered rain sensor:

- [100% solar-powered](#) with built-in rechargeable alkaline power cell
- High-efficient solar panels maintain operation throughout all seasons
- Self-emptying bucket
- Transmission range: 50 meters (open field, free of obstructions)

Wireless solar-powered wind sensor

- [100% solar-powered](#) with built-in rechargeable alkaline power cell
- High-efficient solar panels maintain operation throughout all seasons
- Transmission range: 50 meters (open field, free of obstructions)

Wireless thermo-hygro sensor

- Transmission of temperature and humidity data
- Transmission range : [100 meters](#) (open field, free of obstructions)

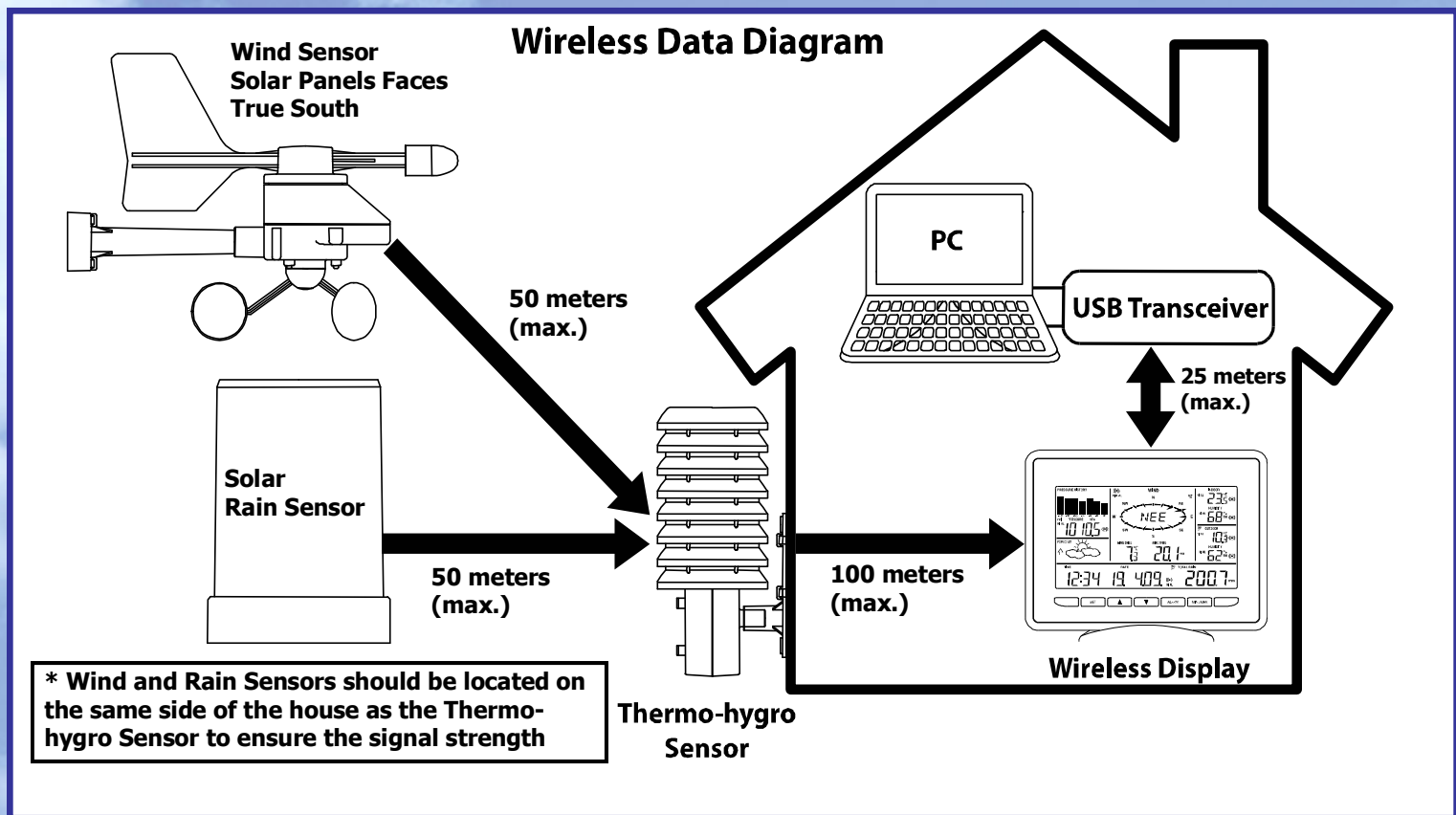


Hereafter transmissions details :

- The anemometer and the rain gauge send their information towards the thermo/hygro sensor (transmission distance : 50 meters)
- Then, the thermo/hygro sensor send them towards the base station (transmission distance : 100 meters)

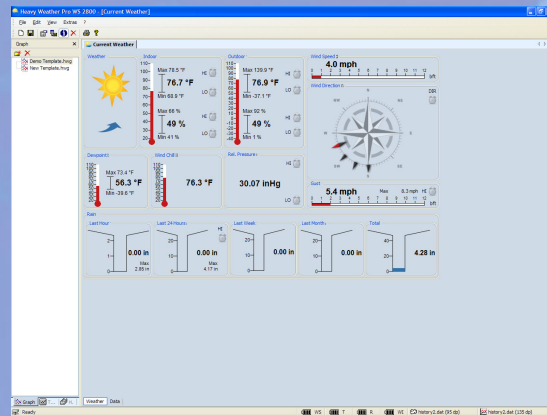
For PC transfert, you just have to synchronize the base station with the USB stick.

All is Totally wireless !



Associated software allows you to follow and run data :

** In real time :



** By History :

The screenshot shows the 'History' window of the software, which lists a series of weather data points. The table below represents the data shown in the window.

Number	Date	Ind. Temp. (°F)	Out. Temp. (°F)
0	09.15.2009 02:15 AM	71.6	72.7
1	09.15.2009 02:30 AM	71.6	72.7
2	09.15.2009 02:45 AM	71.5	72.5
3	09.15.2009 03:00 AM	71.3	72.5
4	09.15.2009 03:15 AM	71.3	72.5
5	09.15.2009 03:30 AM	71.3	72.5
6	09.15.2009 03:45 AM	71.3	72.4
7	09.15.2009 04:00 AM	71.1	72.4
8	09.15.2009 04:15 AM	70.9	72.2
9	09.15.2009 04:30 AM	70.9	72.0
10	09.15.2009 04:45 AM	70.7	72.0
11	09.15.2009 05:00 AM	70.6	71.8
12	09.15.2009 05:15 AM	70.7	71.8
13	09.15.2009 05:30 AM	70.4	71.6
14	09.15.2009 05:45 AM	70.6	71.8
15	09.15.2009 06:00 AM	71.1	72.0
16	09.15.2009 06:15 AM	71.1	72.2
17	09.15.2009 06:30 AM	71.3	72.0
18	09.15.2009 06:45 AM	71.3	72.2
19	09.15.2009 07:00 AM	71.3	72.2

** By graphs :

