

SOFTWARE USER MANUAL

Weather Capture Advance

WS1640

WM9280

TABLE OF CONTENTS

1. Introduction	3
1.1 System requirements	
1.2 Connection of the weather station	
1.3 Installation of the Weather Capture Advance software	
2. Working with the Weather Capture Advance software	4
2.1 Using the program menu	
2.1.1 File menu	
2.1.2 Record menu	
2.1.3 Setting menu	
2.1.4 Help menu	
2.2 Basic Settings	
2.2.1 Altitude	
2.2.2 Location	
2.2.3 Temperature / Humidity / Dewpoint	
2.2.4 Display	
2.2.5 Alarm setting	
2.2.6 Displaying units	
3. Charts	9
3.1 Line charts	
3.2 Pie charts	
4. Main window displays	11
4.1 Atmospheric pressure	
4.2 Ultra violet	
4.3 Sun / Moon / Location	
4.4 In-Outdoor temperature / humidity	
4.5 Rain	
4.6 Wind	
4.7 Data transmission	
4.8 Date / Time (from PC)	
5. Saved file	14
6. Print	16

1. Introduction

1.1 System requirements

PC/AT	compatible with 80486 processor or higher
Hard disk	at least 100 MB free capacity for installation of software, enough space for recording the data (depends on saving interval)
Memory	at least 100 MB free capacity
Graphics	resolution at least 1024 x 768 or higher
Mouse	MS-Windows® compatible mouse or similar device
Windows®	Windows 98 se, ME, XP, NT, 2000, Vista, 7 (32bit) and 8 (32bit)
USB	one USB port, suitable HID driver (standard with the operating systems)
USB Cable	connection USB cable
Weatherstation	a main unit device

1.2 Connection of the weather station

Connect your properly operating weather station to a free USB port using a suitable USB cable. At the initial time, the operating system detects a new hardware, searches for a suitable driver and installs it.

1.3 Installation of the Weather Capture Advance software

Before the installation of the Weather Capture Advance software, please connect your weather station as described in section 2.2. To minimize problem on start up, please ensure the values displayed on the weather station are up to date (i.e. time is synchronized, the measurement values are displayed as expected, no sensor has a missing link).

If so, install the Weather Capture Advance software which is supplied on a CD.

a) Insert the CD in your CD-ROM drive. Most systems will detect the CD automatically and start the installation routine. If not, start the installation via the task bar by selecting Start > Run > [your CD-ROM drive] > Setup.exe.

b) Now, follow the instructions of the installation routine. You can change the target directory as you or choose the suggested directory "Programs\Weather Capture Advance".

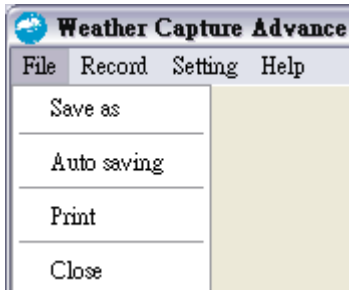
c) The installation routine will create a program group for the directory selected and a program symbol with the name "Weather Capture Advance".

d) If you want to run the program later, double-click on the program symbol "Weather Capture Advance" on your desktop or select Start > Programs > [click on: Weather Capture Advance]. All data from the weather station must be downloaded. It is necessary, that the weather station is connected and ready to operate. The data transfer takes about 8 minutes.

2. Working with the Weather Capture Advance software

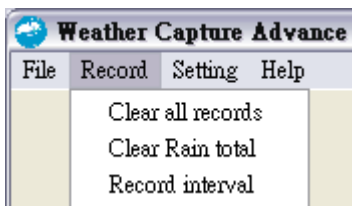
2.1 Using the program menu

2.1.1 File menu



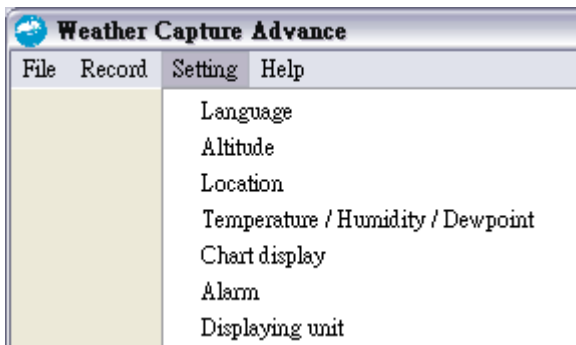
Save as	Save file as you desired. It can be Excel, Text or JPEG format.
Auto saving	Auto save Excel or Text format with selected interval.
Print	Used for previewing and printing a hardcopy
Close	Exit the program

2.1.2 Record menu



Clear all records	Clear all records in the PC program
Clear Rain total	Clear rainfall total record only
Record interval	Used for setting a record interval

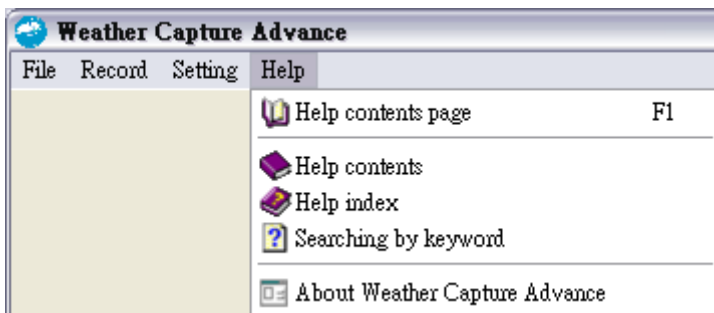
2.1.3 Setting menu



Language	Used for selecting program language
Altitude	Used for setting an altitude
Location	Used for setting a location

- Temperature / Humidity / Dewpoint Used for setting a type, thickness and color of line and location name of weather station and each sensors
- Chart display Used for setting chart display.
- Alarm Used for setting a weather alarm and alarm time
- Displaying Unit Used for setting a displaying unit of program

2.1.4 Help menu

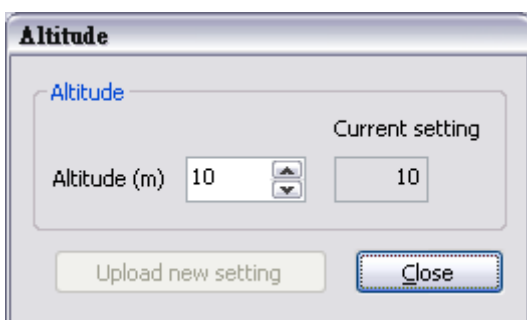


- Help contents page (F1) Shows the page concerning the chapter “contents”
- Help contents Selection of help themes by chapters
- Help index Selection of help themes by a predefined index
- Searching by keyword List of desirable keywords, found in the help file
- About Weather Capture Advance Information of weather station

2.2 Basic Settings

2.2.1 Altitude

After change the altitude, the relative sea level will be calculated. Please note that this change will not affect the weather forecast.



2.2.2 Location

Local settings are the setting for local (Master) city. It will affect the internal time such that the local time, local sunrise time and local sunset time will be affected. 2nd setting is the setting for slave city. It

will affect the sunrise and sunset time of slave city.

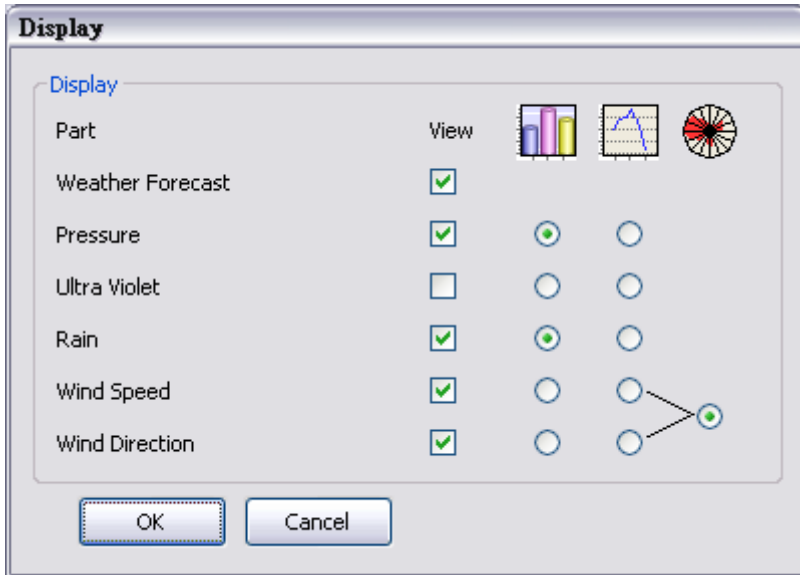
2.2.3 Temperature / Humidity / Dewpoint

This window can be set the location name for a note of sensor location and the line style of sensor for the line chart. The line type, thickness and color can be changed after clicking on the small box and thereafter selecting the line pattern.

Channel	Location name	Temperature Line Type	Temperature Thickness	Temperature Color	Humidity Line Type	Humidity Thickness	Humidity Color	Dewpoint Line Type	Dewpoint Thickness	Dewpoint Color
Indoor	Indoor	Solid	1/2 pt	Red	Dotted	1 pt	Red	Dashed	1 1/2 pt	Red
Channel 1	Channel 1	Solid	1/2 pt	Red	Dotted	1 pt	Red	Dashed	1 1/2 pt	Red
Channel 2	Channel 2	Solid	1/2 pt	Orange	Dotted	1 pt	Orange	Dashed	1 1/2 pt	Orange
Channel 3	Channel 3	Solid	1/2 pt	Yellow	Dotted	1 pt	Yellow	Dashed	1 1/2 pt	Yellow
Channel 4	Channel 4	Solid	1/2 pt	Green	Dotted	1 pt	Green	Dashed	1 1/2 pt	Green
Channel 5	Channel 5	Solid	1/2 pt	Blue	Dotted	1 pt	Blue	Dashed	1 1/2 pt	Blue

2.2.4 Display

Click the box of individual part can set whether display the related part in main window or not. Here can select the type of chart by switch box. Default unselects Ultra Violet. Click the box of Ultra Violet will show the chart of Ultra Violet.



If your station has not Ultra Violet, it will not have any UV data for displaying.

2.2.5 Alarm setting

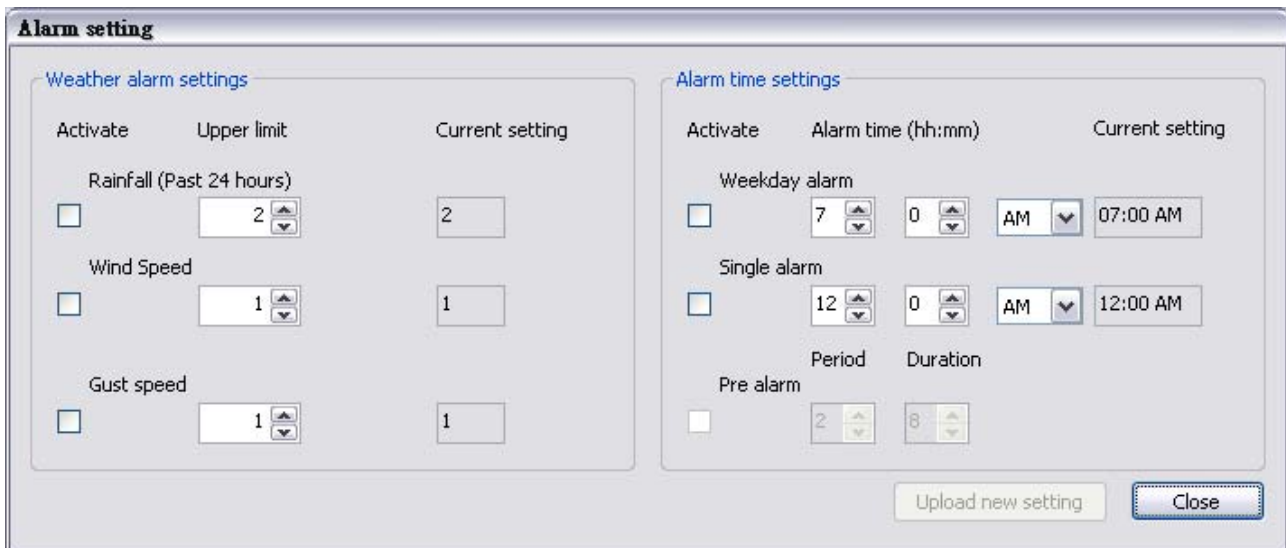
All alarms are activated by desired box and setting the alarm parameter at the desired edit field.

The rainfall, wind speed and gust speed alarm are turned on if the current rainfall, wind speed and gust speed over the limit respectively.

The weekday alarm is turned on every weekday and stays activated, even it is switched off (In Weather station) after an alarm.

The single alarm is turned on only one time, and then it is switched off after an alarm.

The pre alarm has effect only if weekday or single alarm is activated.



2.2.6 Displaying units

These are the unit settings for the altitude, ultra violet, air pressure, temperature, rain and wind speed. The hour format can be set 24hr or 12hr. All the unit settings are used inside the program

do not influence to any physical unit of weather station itself.

Displaying unit

Displaying unit

English
 Scientific
 Metric
 Custom

Altitude
m

Ultra violet
UVI

Pressure
mBar/hPa

Rain
mm

Hour format
12hr

Temperature
°C

Wind
km/h

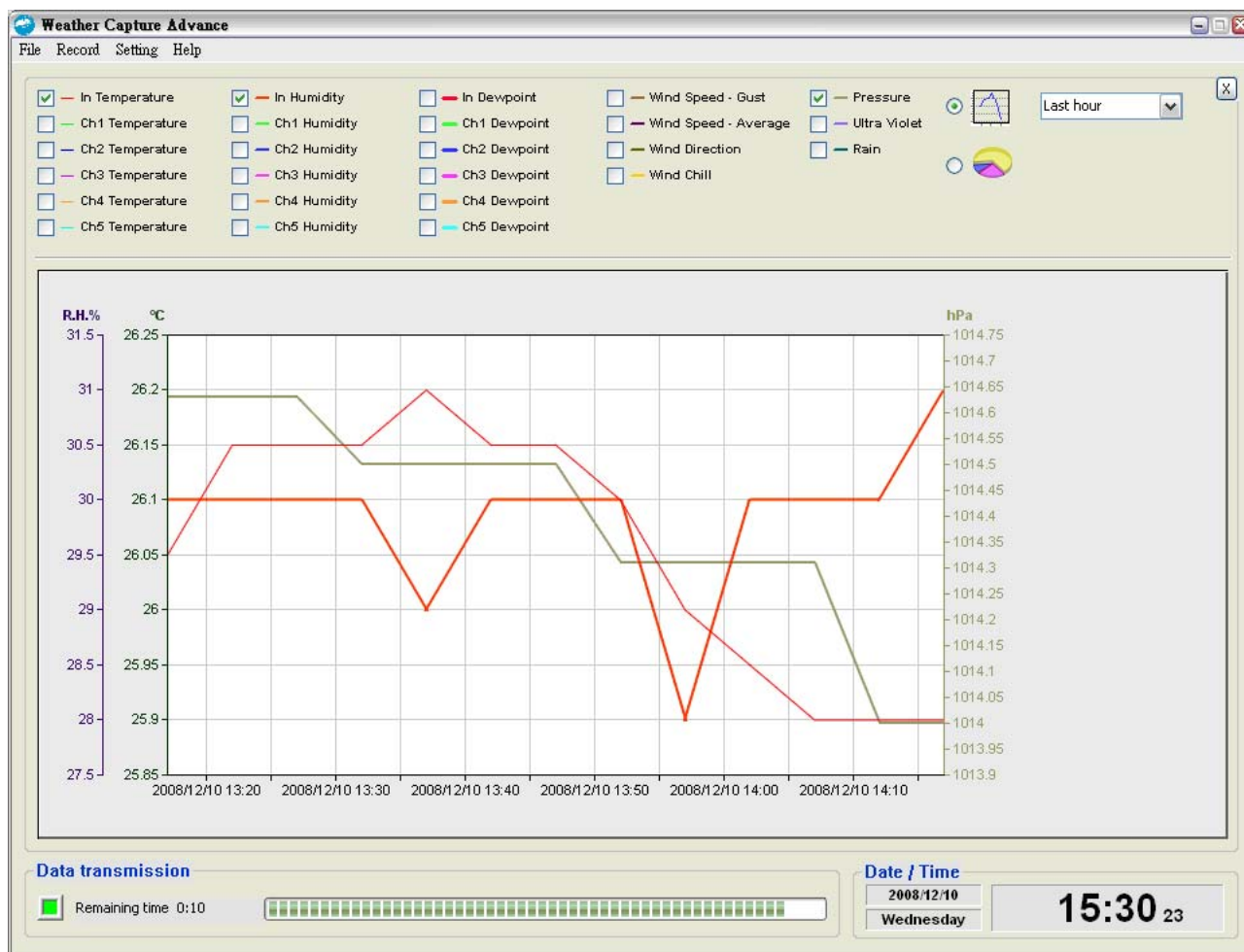
These unit settings are used inside the program exclusively!

OK Cancel

3. Charts

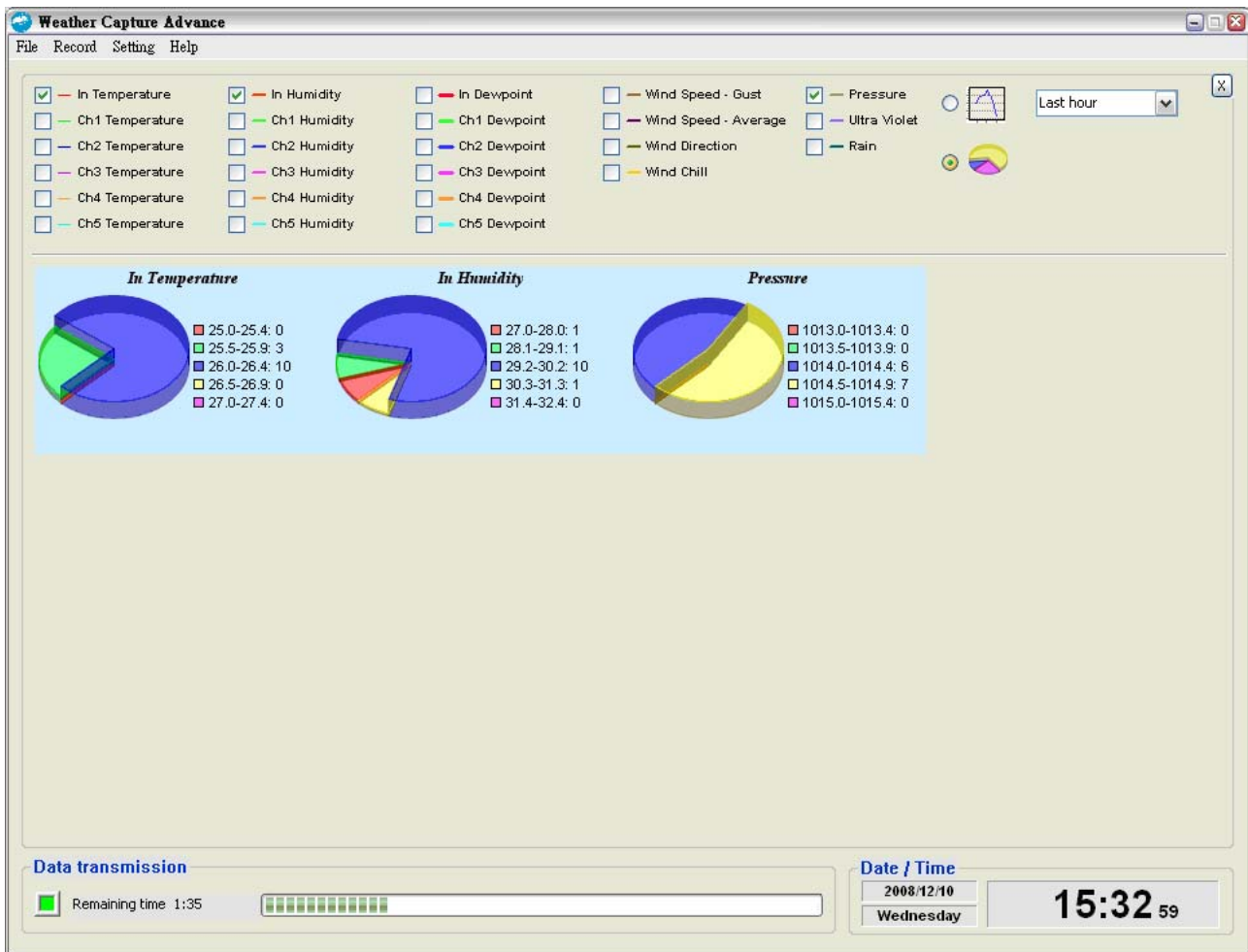
Move the mouse pointer to the diagrams in main window. Left click will enter into detail chart. It can display any maximum 12 line and pie charts.

3.1 Line charts



The chart is showing the data from Weather Station. For more data, please refer to section 3.1.1 and 6 for file save as and save file respectively.

3.2 Pie charts

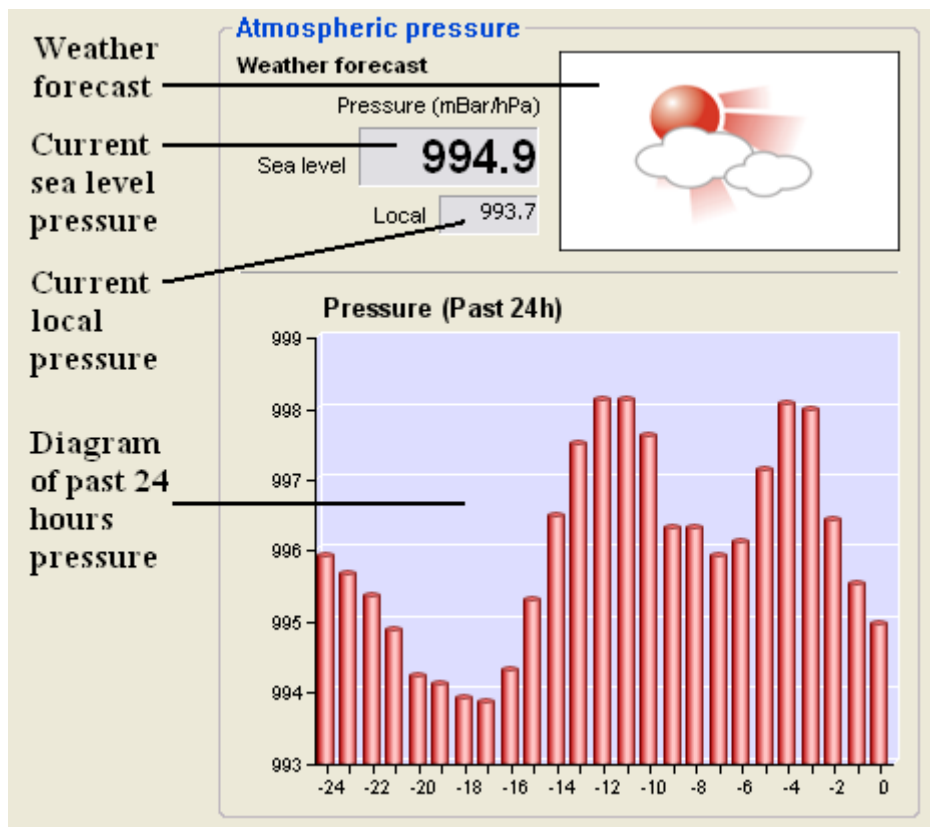


The chart is showing the data from Weather Station. For more data, please refer to section 3.1.1 and 6 for file save as and saved file respectively.

4. Main window displays

Main window displays below values from weather station every two minutes.

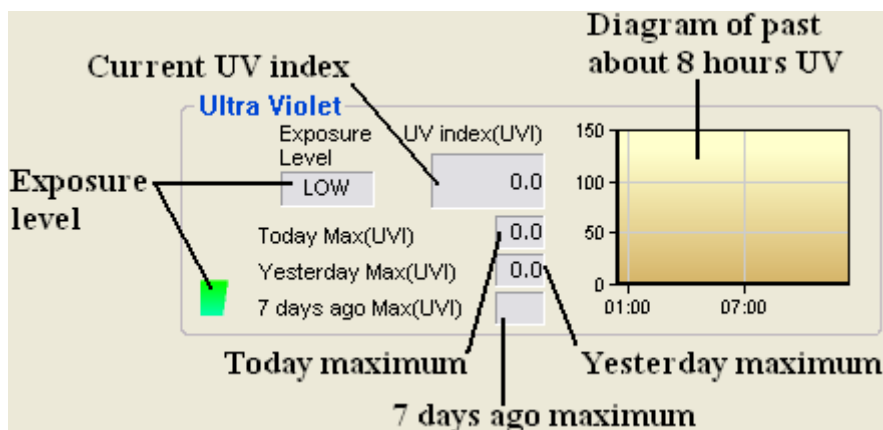
4.1 Atmospheric pressure



If the data is not enough, the content of diagram will be shown less than 24 hours.

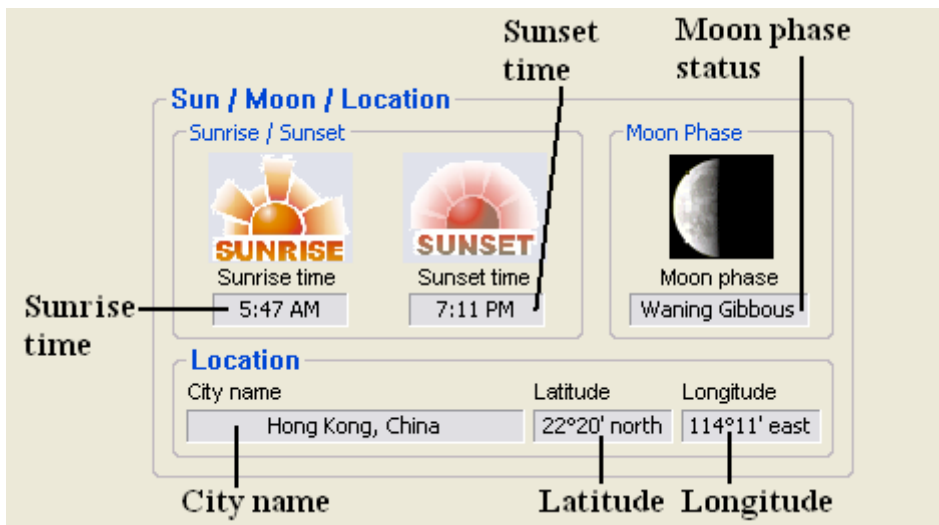
The weather station transmits the air pressure of sea level to the PC only. The local pressure is calculated from sea level pressure and altitude of the weather station. Small deviations may appear sometimes.

4.2 Ultra violet



If the data is not enough, the value frame will be no data and the content of diagram will be shown less than 8 hours.

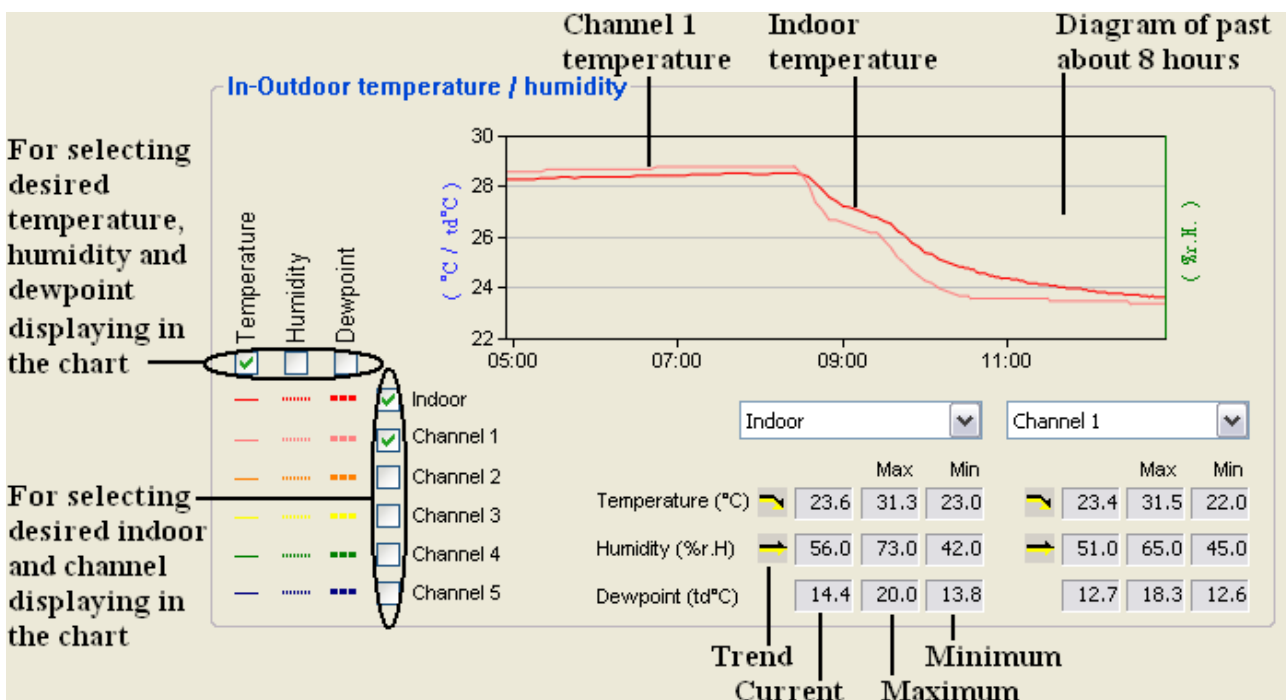
4.3 Sun / Moon / Location



The weather station does not transmit any data of sunrise and sunset to the PC. The sunrise and sunset are calculated from the current date, time and the geographical data by the program. Therefore, deviations may appear.

The weather station does not transmit any data of the moon phase to the PC. The moon phase is calculated from the current date, time and the geographical data by the program. Therefore, deviations may appear.

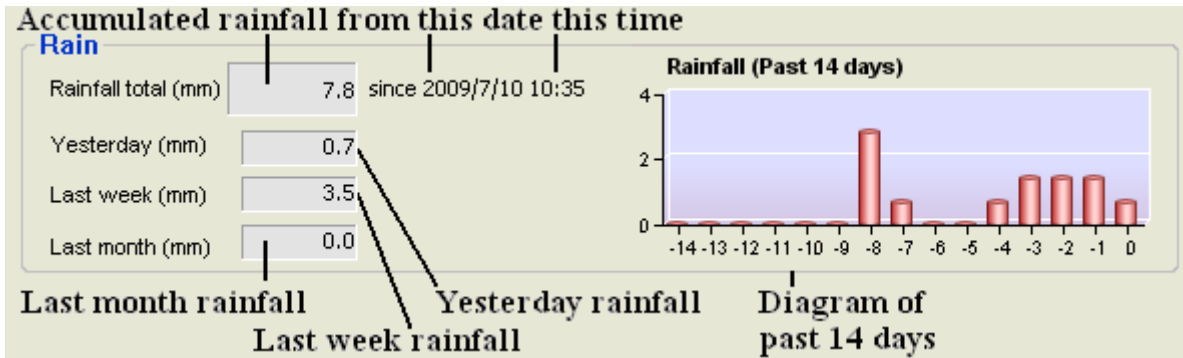
4.4 In-Outdoor temperature / humidity



If the data is not enough, the content of diagram will be shown less than 8 hours.

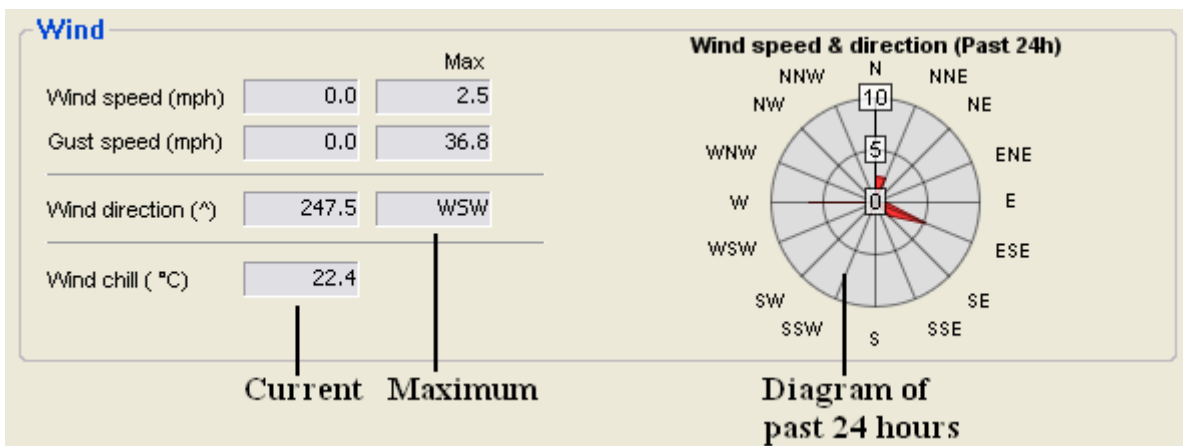
The weather station does not transmit any data of the dewpoint to the PC. The dewpoint is calculated from the current temperature and humidity data by the program. Therefore, deviations may appear.

4.5 Rain



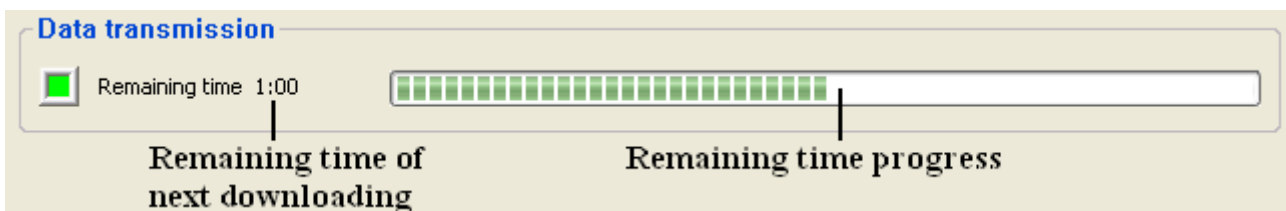
If the data is not enough, the content of diagram will be shown less than 14 days.

4.6 Wind

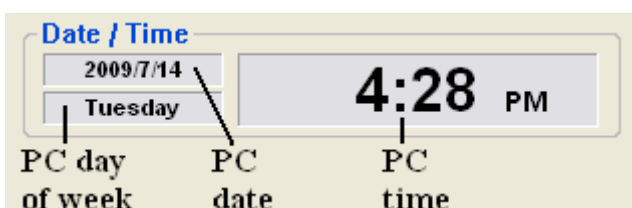


If the data is not enough, the content of diagram will be shown less than 24 hours.

4.7 Data transmission



4.8 Date / Time (from PC)



5. Saved file

The units in the saved file depend on what units selected in “Displaying unit” dialog of the software.

Both displaying and saving unit are in same system.

The following is an example of the Save as file:

Year	Weekday	Month	Date	Hour	Minute		
2009	4	1	1	1	11		
InTemp (degC)	InRH (%)	CH1Temp (degC)	CH1RH (%)				
25.80	57	24.10	56				
CH2Temp (degC)	CH2RH (%)	CH3Temp (degC)	CH3RH (%)				
24.30	58						
CH4Temp (degC)	CH4RH (%)	CH5Temp (degC)	CH5RH (%)				
UV (UVI)	Baro (hpa)	Weather					
7.10	999.25	4					
Wchill (degC)	Wgust (MPH)	Wspeed (MPH)	W_Dir				
24.40	0.00	0.00	12				
RainCount	OneHour	r24Hour	Yesterday	LastWeek	LastMonth		
0			0.0	0.0	0.0		
uvDaily	uvWeekly						
5.9	5.6						

The following is an example of the Auto saving file:

Computer Date / Time,2009.01.01 01:11
Device Date / Time,2009.01.01 01:09
Pressure (mBar/hPa),999.3
UV index (UVI),7.1
City name,Hong Kong, China
Latitude,22,20,north
Longitude,114,11,east
,Temperature (C),Humidity (%)
Indoor,25.8,57.0
Channel 1,24.1,56.0
Channel 2,24.3,58.0
Channel 3,,
Channel 4,,
Channel 5,,
Rainfall total (mm) ,0.0
Wind Speed (km/h),0.0,Wind Direction,12
Wind Chill (C),24.5,Wind Gust (km/h),0.0

Special note for wind direction:

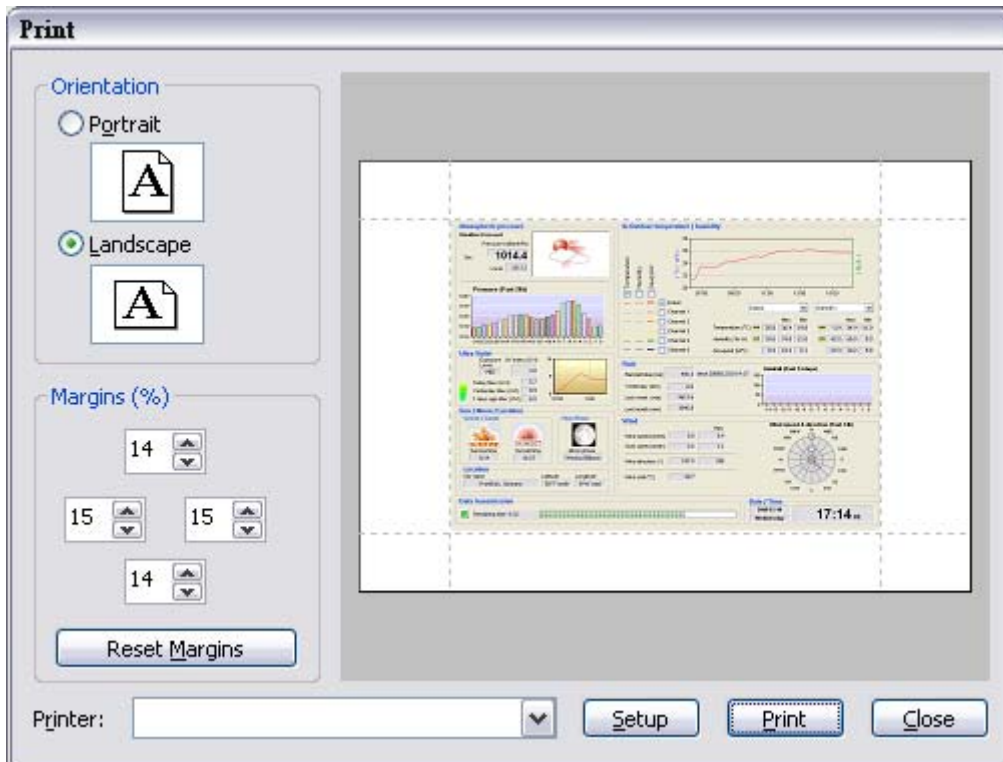
Wind direction number	Direction
0	N
1	NNE
2	NE
3	ENE
4	E
5	ESE
6	SE
7	SSE
8	S
9	SSW
10	SW
11	WSW
12	W
13	WNW
14	NW
15	NNW

Special note for Weather:

Weather number	Weather icon
0	Heavy snowy
1	Lightly snowy
2	Heavy rainy
3	Lightly rainy
4	Cloudy
5	Sunny cloudy
6	Sunny

If the program find any illegal date and time such as they are future values, these values will be ignored to avoid failure operation in the program. So, please ensure the date and time are valid!

6. Print



Printing orientation:

Portrait or Landscape

Margins:

0 to 50%

Printer:

For selecting desired printer

⇒ If you have any questions regarding software use,
please contact us through our mail box : sav@lacrossetechnology.fr

2014-01-09