



# **ESCORT ConsolePlus**

**(EA-SWP-PLUS)**

## **User Manual**

**Ver. 3.1**

## Contents

1.	Quick start Guide .....	3
2.	Dependences .....	4
3.	Accessories.....	4
4.	Installation .....	5
5.	Introduction .....	8
6.	Main Menu.....	10
7.	Icons .....	11
8.	Tabs .....	11
9.	Options (program settings).....	12
	• General tab .....	12
	• View tab .....	13
	• Languages tab .....	14
10.	Program.....	15
	• Program Functions .....	17
11.	Lock program settings.....	19
12.	Template (Save / Load) .....	19
13.	Password protection .....	20
14.	User defined settings .....	21
15.	Download .....	22
16.	Graph .....	23
	• Mouse Zoom: .....	24
	• Mouse Tool Tip: .....	24
17.	Save/ save as.....	24
18.	Auto-open PDF.....	25
19.	Histogram.....	25
20.	Table.....	26
21.	Summary .....	27
22.	Bookmark .....	28
23.	MKT .....	29
24.	Multilink .....	29
25.	Battery Status.....	34
26.	Print / Print-preview .....	34
27.	Update .....	34

Console Plus is new revolutionary software for new product line iMINI, iMINI USB PDF, xTag and all future releases of Escort Verification Technologies/Cryopak Verification Technologies (EVT/CVT) products. It has all features to program, download, view and analyze critical data.

# 1. Quick start Guide

---

ConsolePlus software currently supports following product range

Product Family	Product code	Type	Total No. of Sensors	Sensor Location	Sensor Type
iMINI (yellow case)	<b>MX-IN-S-8-L</b>	Multi-use	1	Internal	NTC
iMINI (yellow case)	<b>MX-ST-S-8-L</b>	Single Use	1	Internal	NTC
iMINI (yellow case)	<b>MX-OE-S-8-L</b>	Multi-use	1	External	NTC
iMINI (yellow case)	<b>MX-1E-S-8-L</b>	Multi-use	2	One Internal & One External	NTC
iMINI (yellow case)	<b>MX-2E-S-8-L</b>	Multi-use	2	Both External	NTC
iMINI (yellow case)	<b>MX-HS-S-8-L</b>	Multi-use	2	Both Internal	Digital sensor
iMINI (yellow case)	<b>MX-HE-S-8-L</b>	Multi-use	3	Two Internal & One External	Digital sensor & NTC
iMINIUSB pdf (Plug & Play)	<b>MS-ST-S-8</b>	Single Use	1	Internal	NTC

All new products from EVT/CVT will be supported by ConsolePlus. Software has in-built auto update feature, when a new release is available it will prompt user to upgrade to newest version. And with one click it will be updated.

## 2. Dependences

---

ConsolePlus can be installed on following platforms

- Windows XP
- Windows 7
- Windows 8

**Adobe reader** (latest Version) must be installed on the computer. If not, user may encounter error

- in PDF generation
- Print
- Print preview
- Software crash

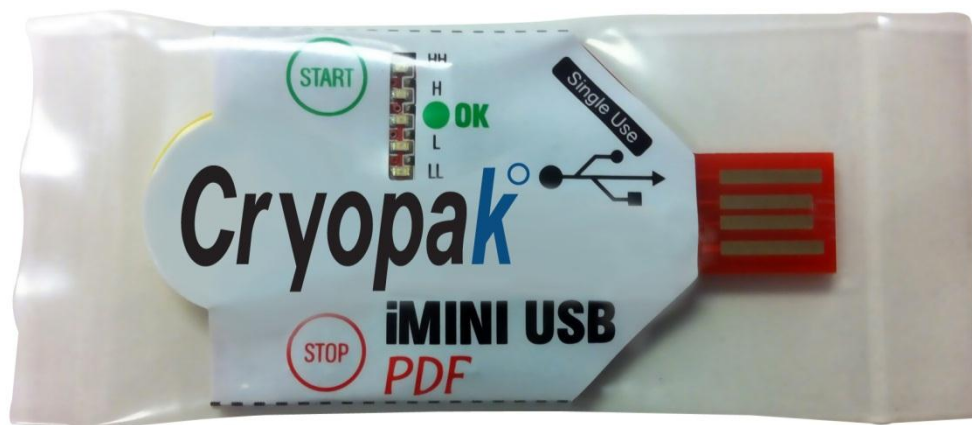
## 3. Accessories

---

- For all **iMINI** (yellow case) data loggers **Type A to Mini-B USB cable** is required to connect data logger to the workstation



- **iMINIUSB** pdf data logger is Plug and Play data logger

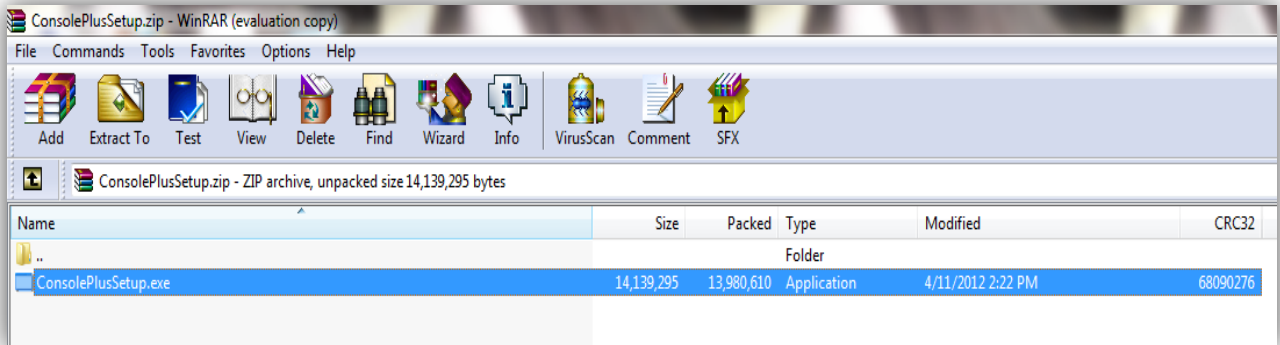


## 4. Installation

---

Setup file can be downloaded from [www.escortdataloggers.com](http://www.escortdataloggers.com) for free  
File name: **ConsolePlusSetup.exe** / **ConsolePlusSetup.zip**

- I. When you get started you should try to install the following application file:

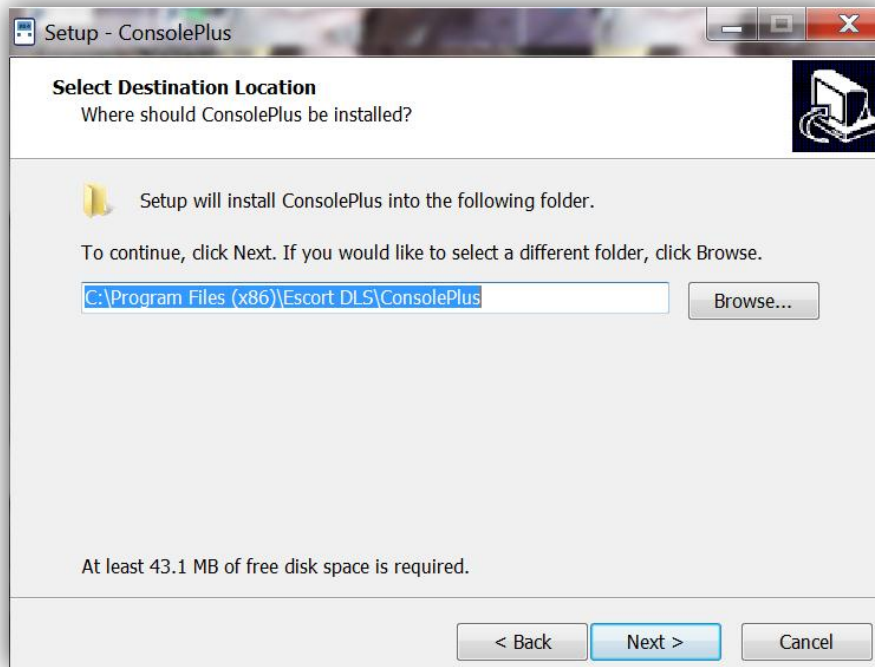


- II. Once you have double clicked ConsolePlusSetup.exe file you will get the following Step through Wizard:

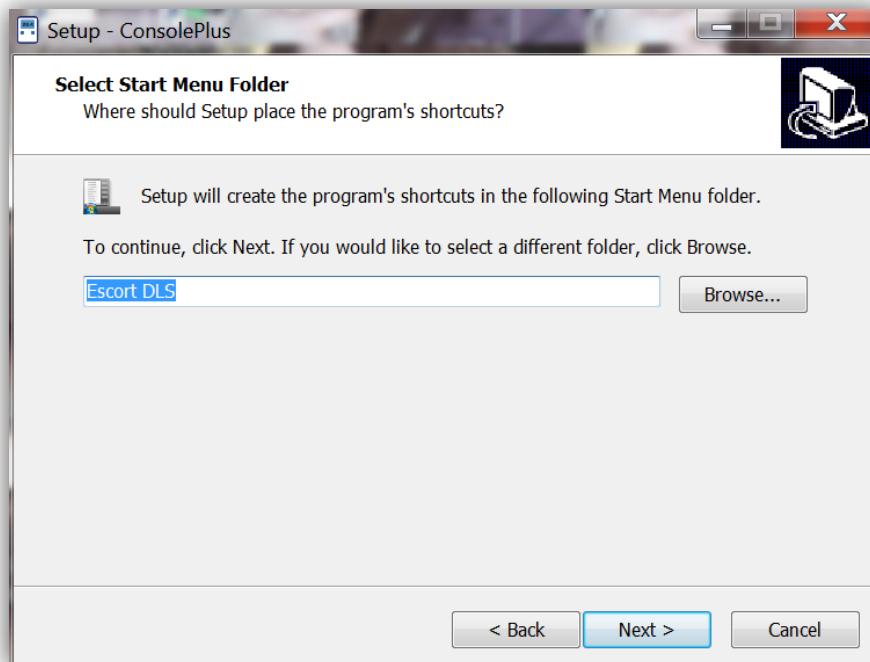


*Note: Version no. \*\*\* is being updated regularly*

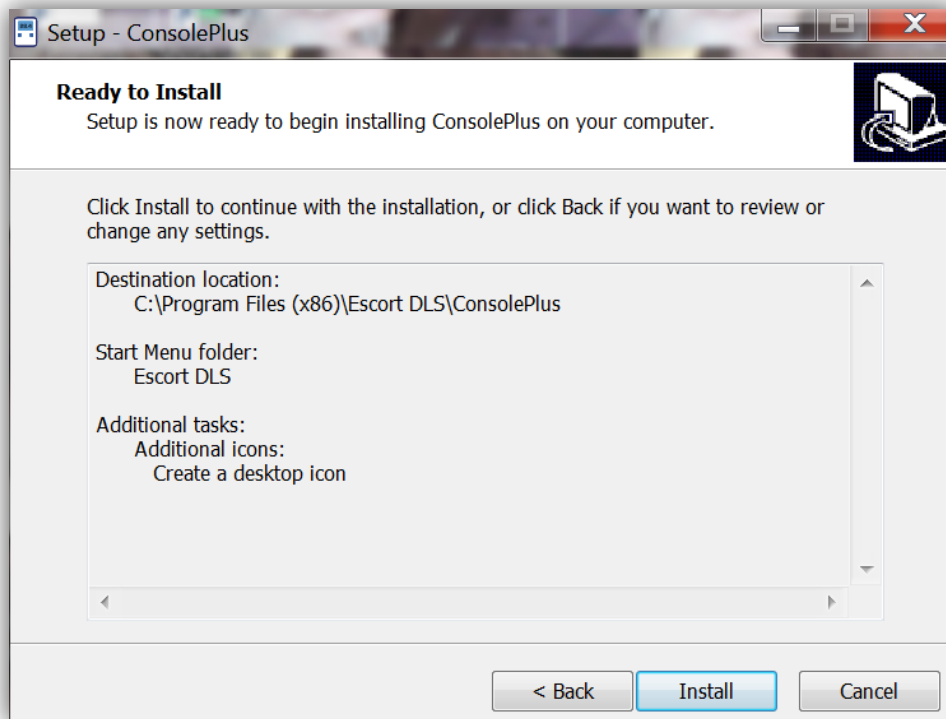
- III. Browse to select the location of installation, if it is necessary or leave as default



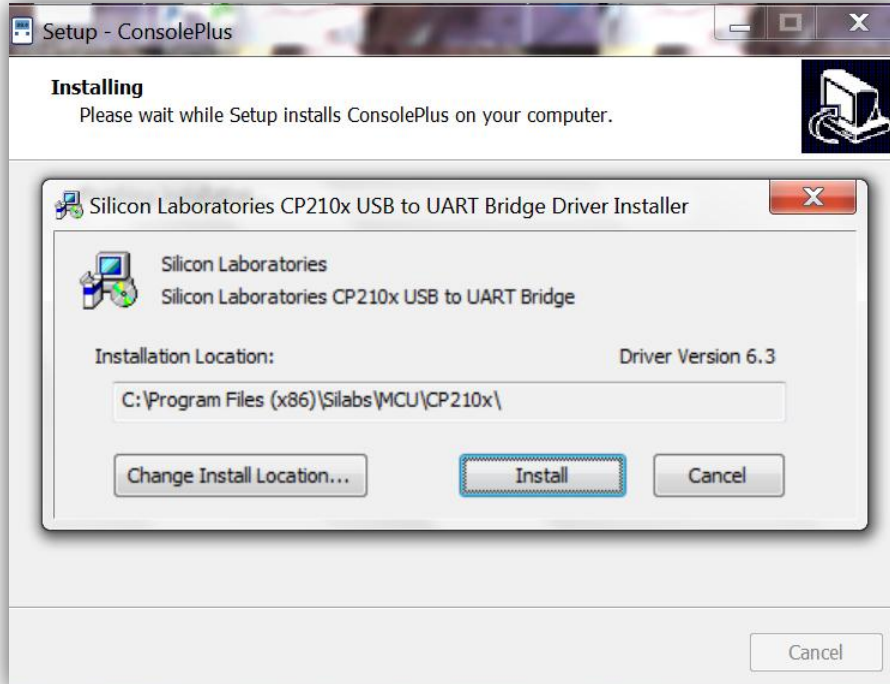
Click NEXT



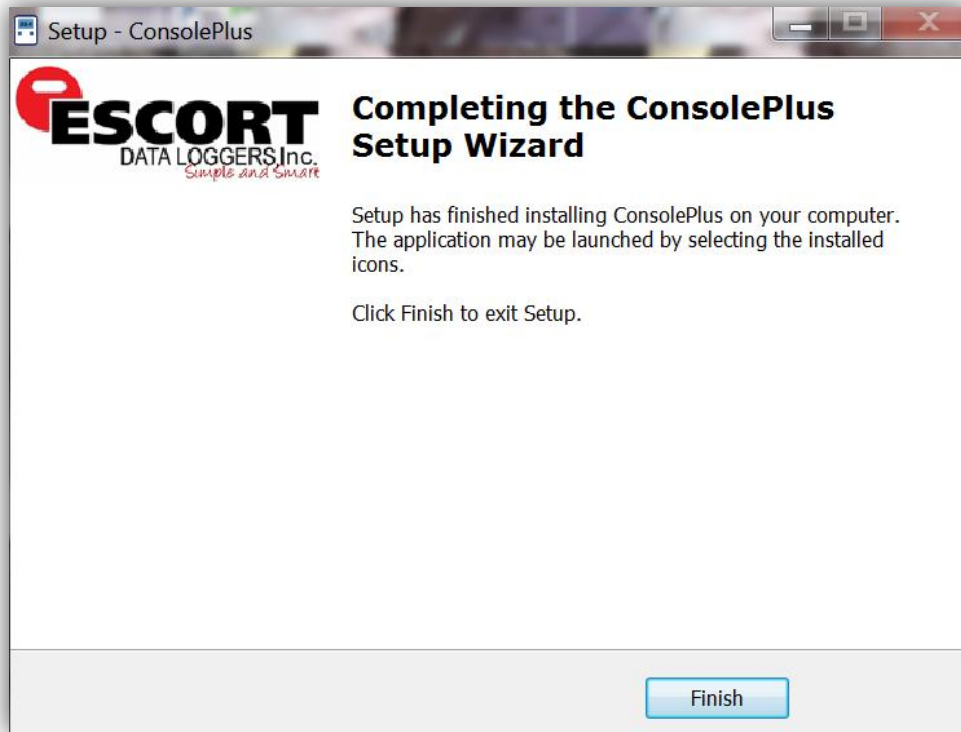
Click NEXT



Click INSTALL to install the necessary drivers



Click INSTALL



Click FINISH to complete the installation process

## 5. Introduction

---

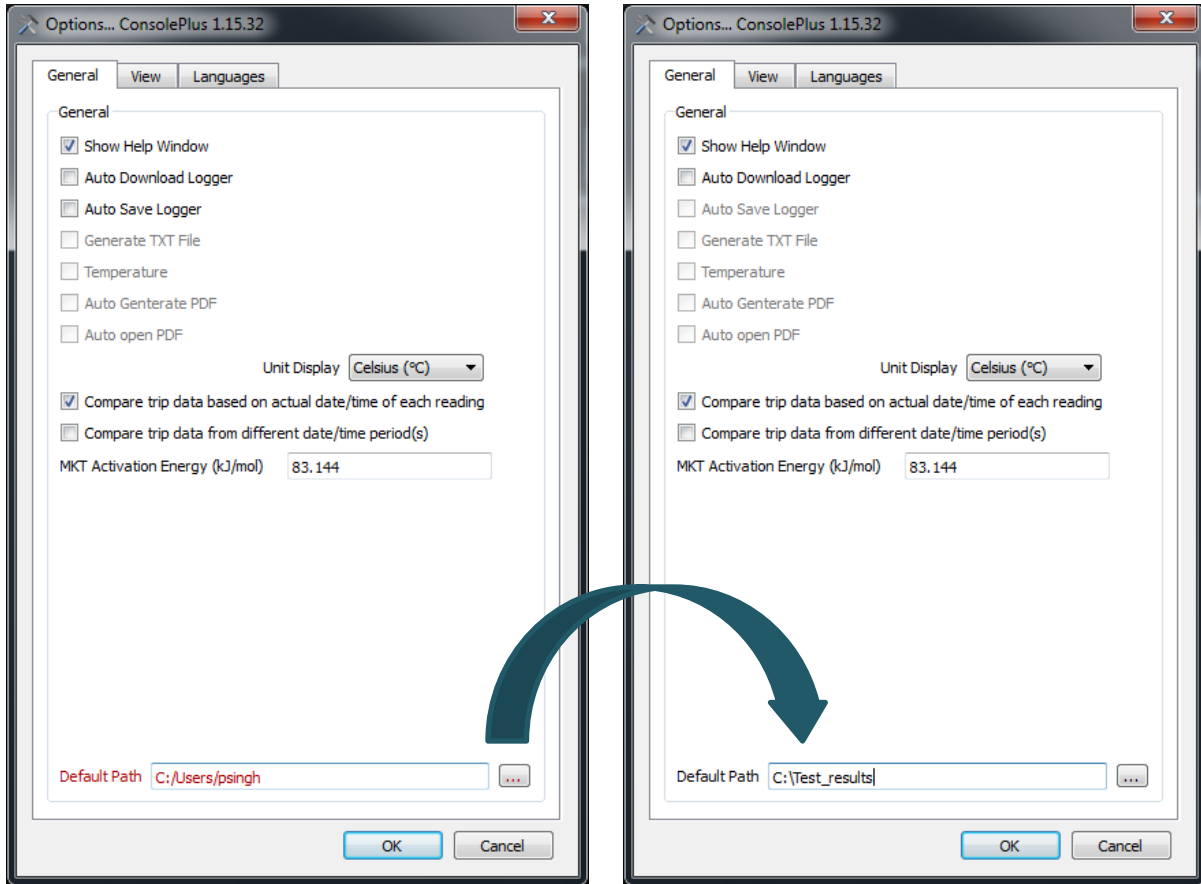
ConsolePlus icon is created and placed on desktop after the installation is completed.



Launch ConsolePlus

- ConsolePlus** \*.\* on top Left Corner, \*.\* denotes current version number
- When the application is launched for first time, the application window will open OPTIONS window and highlight in red text
- A default directory for the data can be assigned here, once default directory is assigned, path becomes black

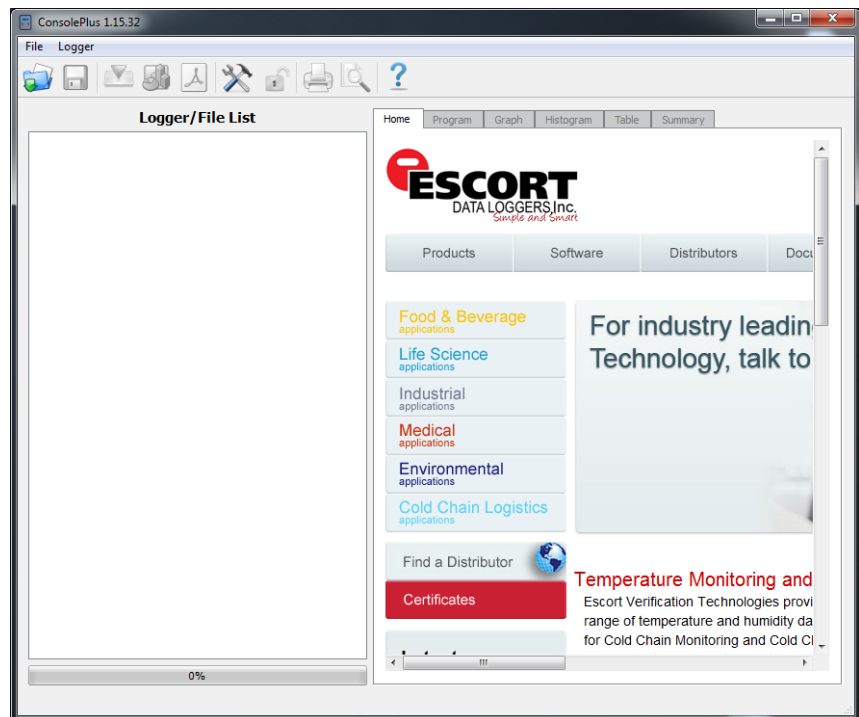




d. Home page is displayed and most of the tabs and functions are greyed out. User can do initial settings at this stage or whenever required by selecting options.

e. Make sure to manually check for updates before proceeding to next step.

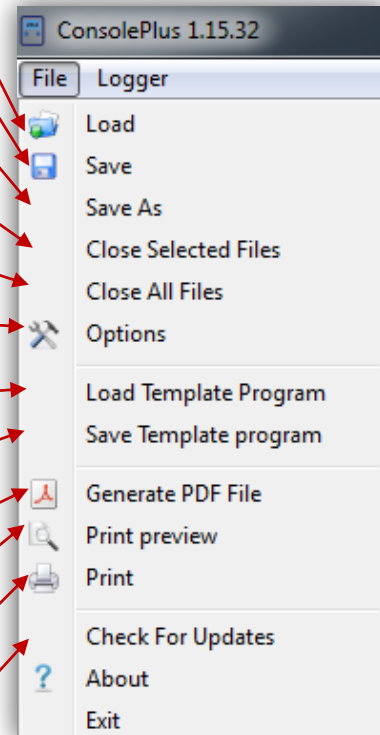
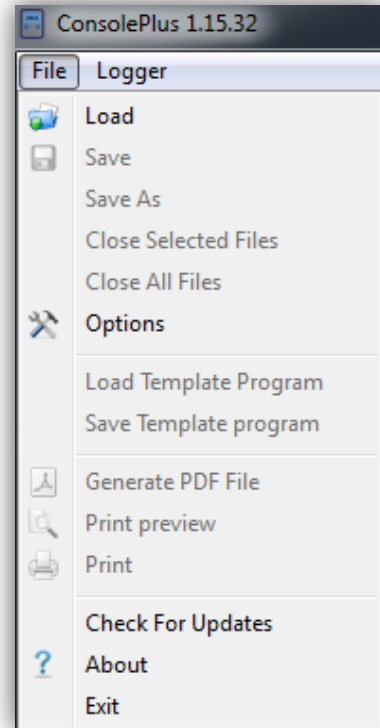
Refer to Step 27



## 6. Main Menu

Most of the functions are disabled initially, and will be highlighted or available depending on if the data logger is plugged in or a file is open.

User can select 'options' any time and change the fields



Open a previously saved file (target default directory)

Save downloaded data of a logger

Save downloaded data of a logger in different format  
e.g. csv & txt

If multiple files are open and want to remove selected files  
from the list

If multiple files are open and want to remove from list

Select to open Options window

Open a previously saved template, to program logger

Save a new template, based on new program settings

Create PDF from the open file, save in default directory

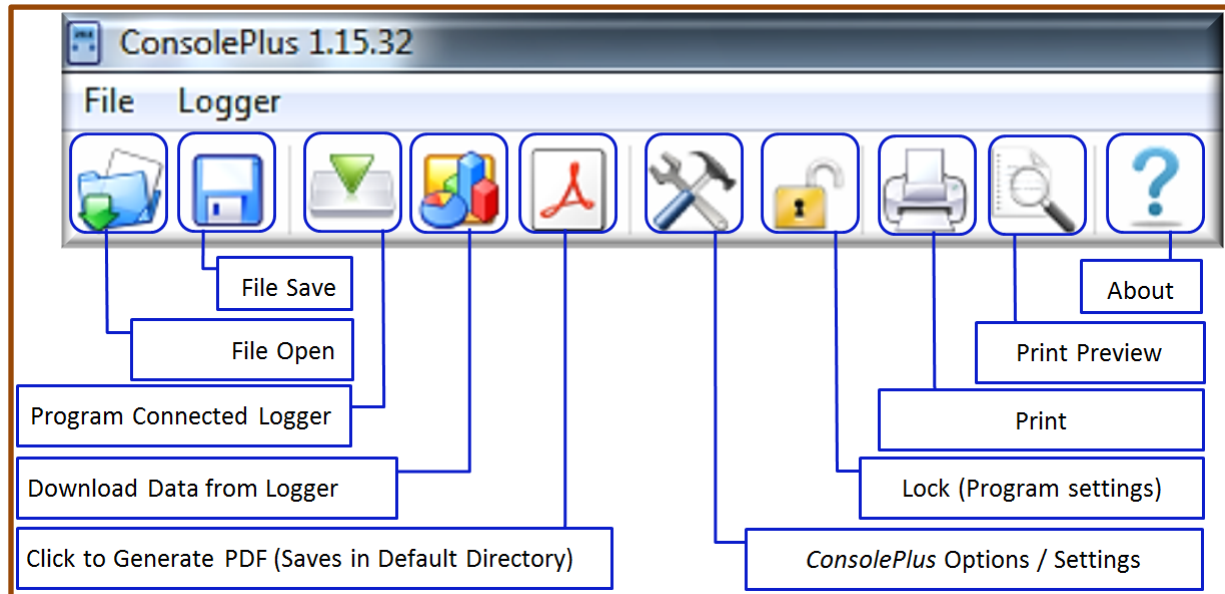
Print preview

Print

Manually check for available software updates

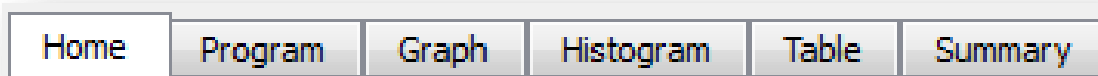
## 7. Icons

---



## 8. Tabs


---

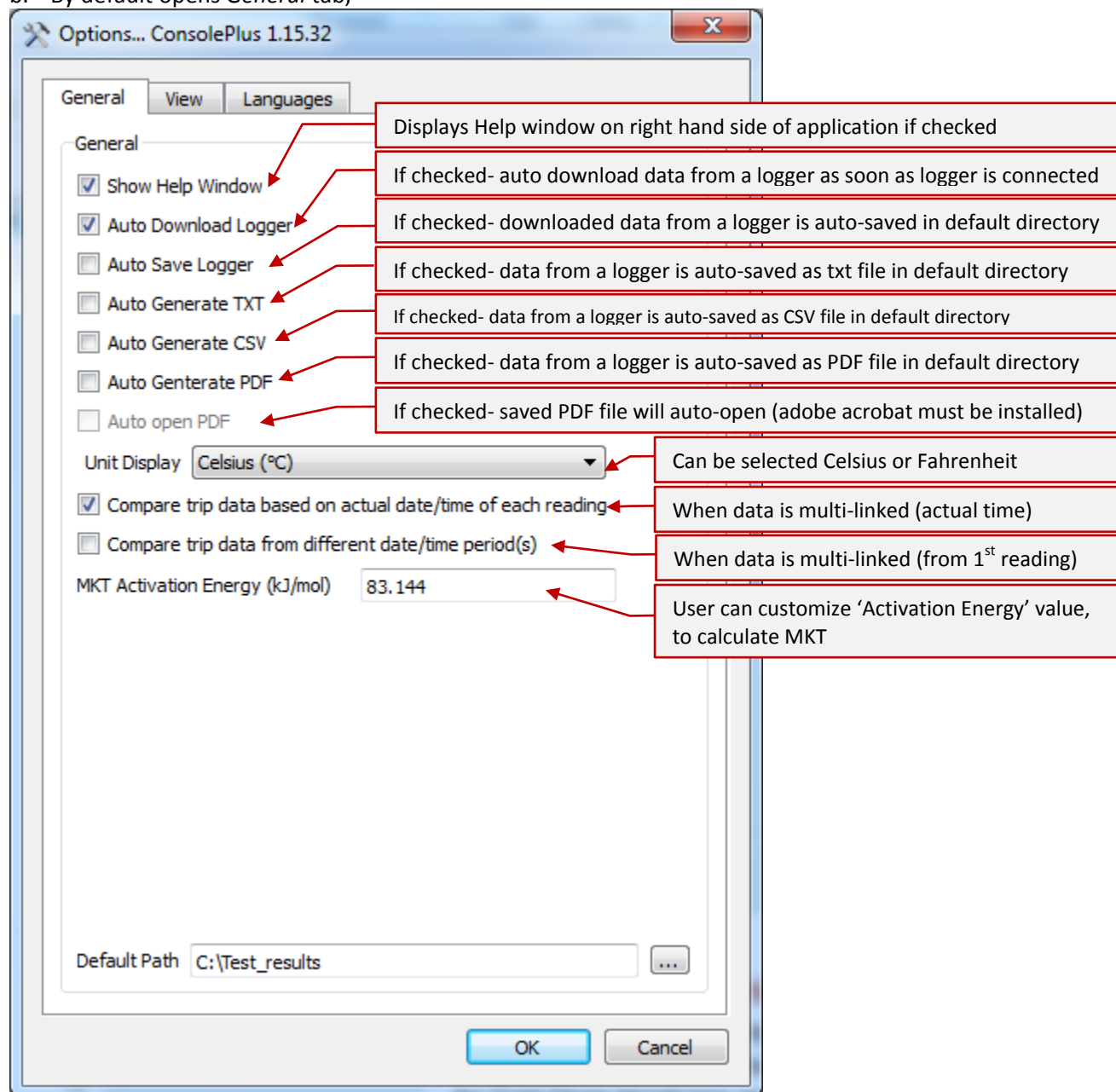


Home:	It display homepage
Program:	Program settings of a programmed logger, or to program a logger
Graph:	Graph view of downloaded data a logger or a file
Histogram:	Histogram view of downloaded data a logger or a file
Table:	data/readings of all sensors of downloaded data of a logger or a file
Summary:	Summary view of downloaded data of a logger or a file

## 9. Options (program settings)

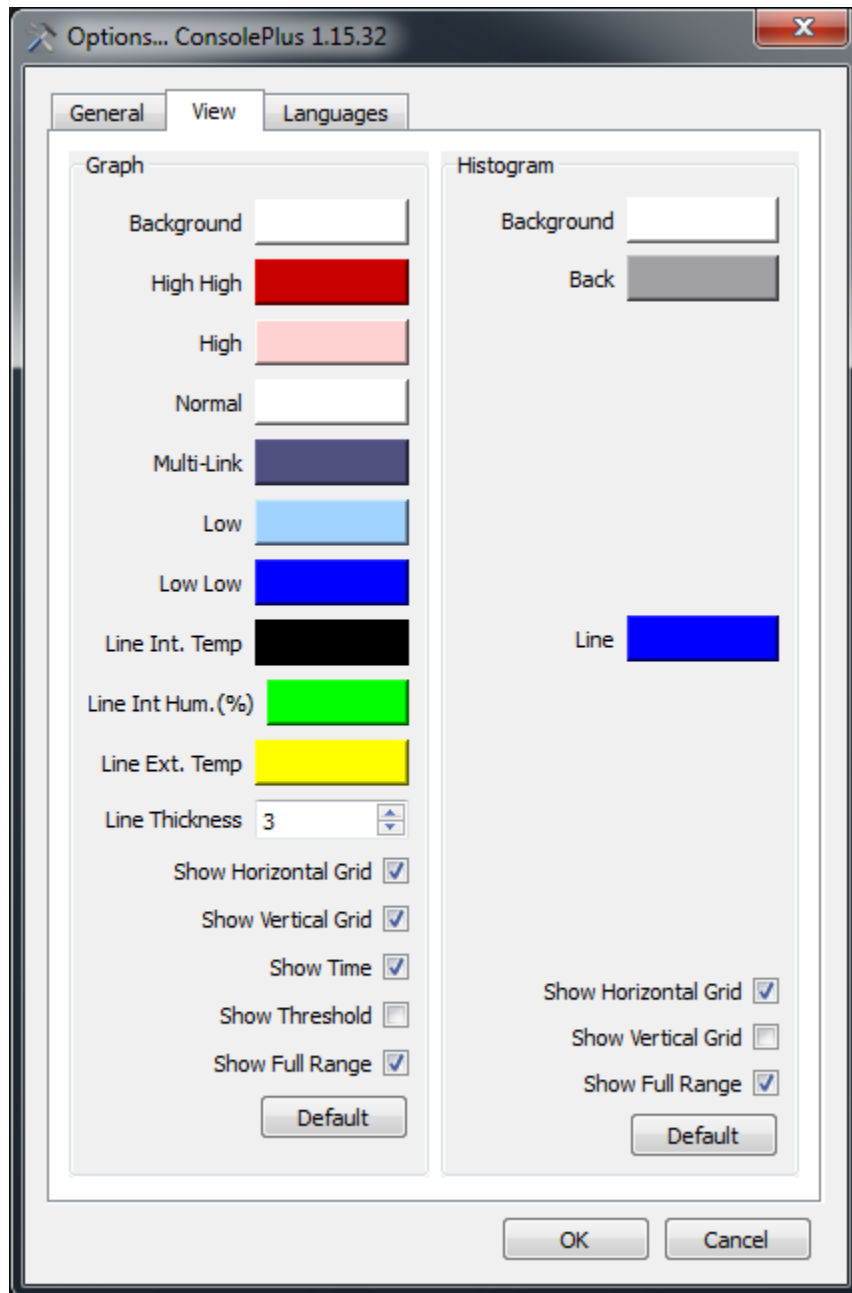
- **General tab**

- Click options, either from MENU, File – Options or simply by clicking icon 
- By default opens *General* tab,



- Select / de-select any of the available options from General tab (e.g. if auto download or auto save required)

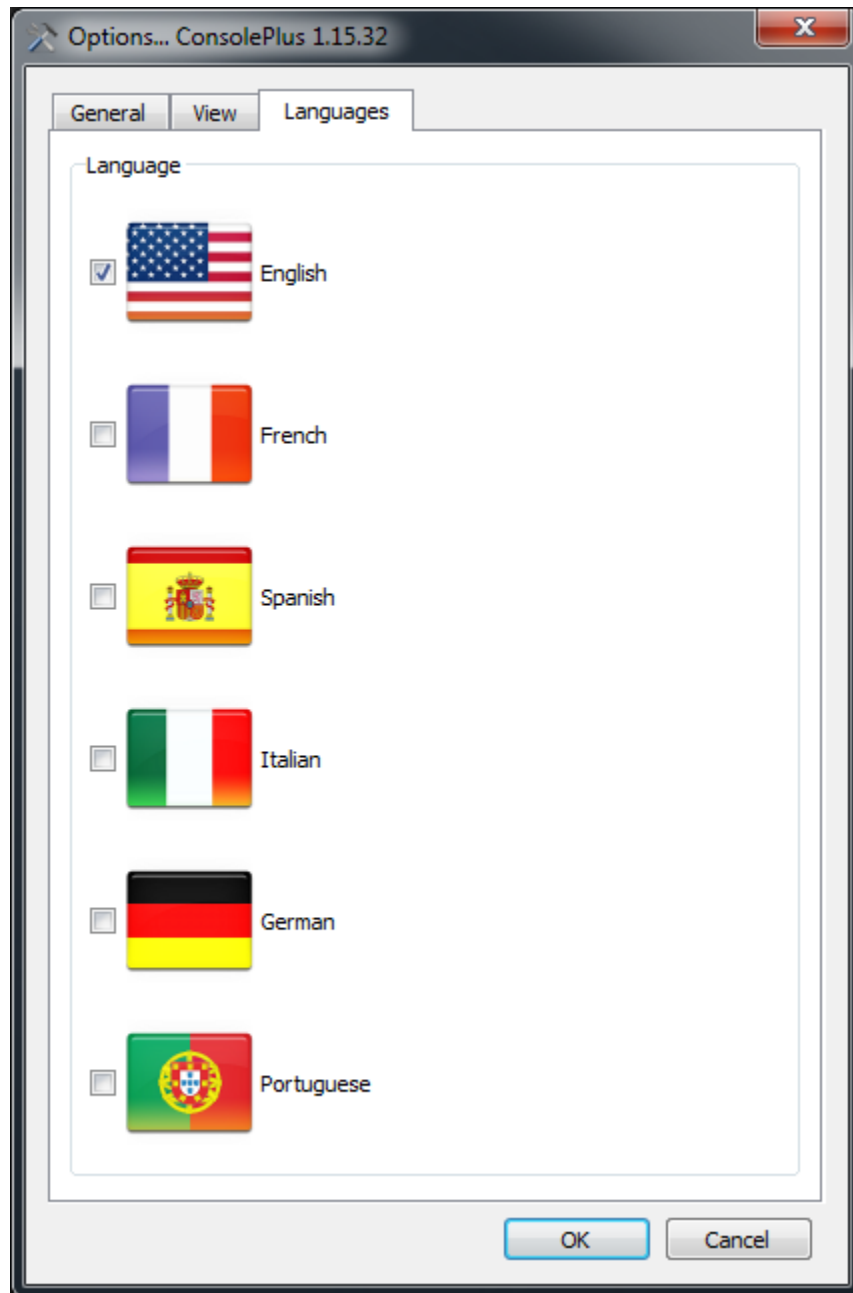
- **View tab**



In View Tab, Graph and Histogram color settings can be changed and set as required

- **Languages tab**

Six languages available to select from the list



# 10. Program

- a. Plugin USB mini port to iMINI and connect the USB port into an available USB slot on workstation. (USB 5pin Mini cable to USB)
- b. ConsolePlus application will recognize the iMINI and will be available on left hand Logger / File List pane
- c. ConsolePlus application will display the serial number of iMINI and the alarm status. In functions tab it will reach to GRAPH tab by default.

**Connected logger-** Communication port number, Serial number and Alarm status

**Open File-** File location, Serial number and Alarm status

Logger/File List									
#	T	Name	Desc.	LL	L	OK	H	HH	
1		COM65	MX-CD-120-4102						
2		C:\Test_re...	MX-CD-116-0003						

Text	Description	Icon
LL	If <b>Low Low Alarm</b> has triggered	
L	If <b>Low Alarm</b> has triggered	
OK	If no alarm has triggered	
H	If <b>High Alarm</b> has triggered	
HH	If <b>High High Alarm</b> has triggered	

- d. If the function tabs are greyed out, click 'download' icon from the top
- e. Select PROGRAM tab. All the previous program information of connected logger is displayed.
- f. If logger has only one sensor or other sensor combination, the respected tabs are greyed out by default. Software auto-detects the type of logger and display existing information  
*Logger with external sensor only (MX-OE-S-8-L) will appear on 1<sup>st</sup> tab and title will appear int/ext temp. (NTC) Instead of Int. Temp (NTC)*

Home Program Graph Histogram Table Summary

Logger Settings

Mini Ver\_01\_35 4/11/2013

Pass: R/W  Allow RD  Allow WR

Serial # MX-CD-100-0120 Mem. Size 8k Rec.

Product # MX-HS-S-8-L Trip # 1

Range(°C) -40/+80

Description ESCORT Verification Tech.

Int. Temp (NTC) Int. Hum Ext. Temp(NTC)

HHigh(°C) 32.0  Enable  Enable Sensor

High(°C) 30.0  Enable Consecutive delay before Alarm 1

Low(°C) 22.0  Enable Total delay before alarm 1

LLow(°C) 20.0  Enable

Program

Start Interval 00h01m00s Stop

At 2000/01/01 00:00  At 2000/01/01 00:00

Wait 00d 00:00  After 2500 Max Rec.

Show Alarms  Stop Button Enable

Show Temp on LCD  Continuous Logging

Auto-Reset Enabled

Duration of Trip, at Least User Defined 13h53m20s

Memory  25%

Int. Temp (NTC) Int. Hum Ext. Temp(NTC)

HHigh(%) 80.0  Enable  Consecutive delay before Alarm

High(%) 60.0  Enable Consecutive delay before Alarm 1

Low(%) 40.0  Enable Total delay before alarm 1

LLow(%) 20.0  Enable

Int. Temp.(Digital) Int. Hum Ext. Temp(NTC)

HHigh(°C) 12.0  Enable  Total delay before alarm

High(°C) 8.0  Enable Consecutive delay before Alarm 2

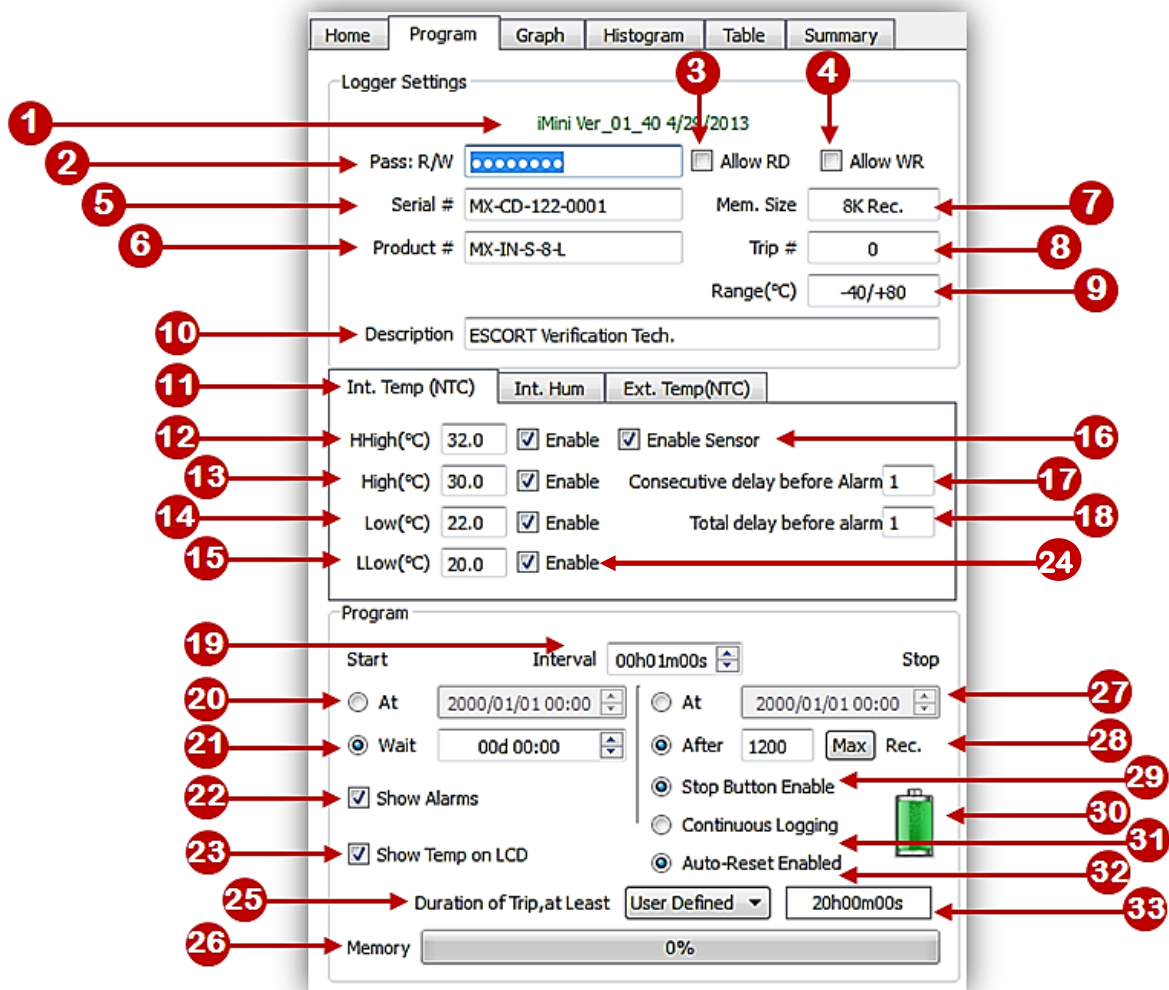
Low(°C) 2.0  Enable Total delay before alarm 3

LLow(°C) -2.0  Enable

PROGRAM TAB



- Program Functions



No.	Details	Read / write
1	Firmware version of connected logger, or the logger of saved file	Read only
2	Enter Password, up to 8 numbers	write only
3	Allow to read the logger without password	
4	Allow to program the logger without password	
5	Serial number of the logger	Read only
6	Product code of the logger	Read only
7	Memory size of the logger	Read only
8	Trip number of the logger	Read only
9	Temperature range of the logger	Read only
10	Description	Read / Write
11	Sensor Int temp. / ext temp / Humidity	
12	High High Alarm threshold	Read / Write
13	High Alarm threshold	Read / Write
14	Low Alarm threshold	Read / Write
15	Low Low Alarm threshold	Read / Write
16	Sensor enable / disable	Read / Write
17	Consecutive delay before alarm (1 – 254)	Read / Write

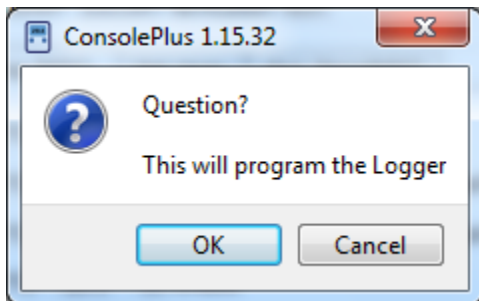
18	Total delay before alarm (1 – 254)	Read / Write
19	Interval between each reading (5 seconds to 17H:59M:59S)	Read / Write
20	Start the logger at pre-defined date and time	Read / Write
21	Select the start delay	Read / Write
22	Show Alarms on the display	Read / Write
23	Show temperature on the display	Read / Write
24	Enable alarms, select / deselect, any or all	Read / Write
25	Duration of the trip, can be user defined, or choose from list	Read / Write
26	Memory used in previous trip	Read only
27	Stop the logger at pre-defined time (if selected)	Read / Write
28	Stop the logger after “ “ number of readings have been taken	Read / Write
29	Enable stop button	Read /Write
30	Battery status Icon	Read only
31	Enable non-stop logging (not available for single use loggers)	Read /Write(multi use)
32	Auto-reset enabled (not available for single use loggers)	Read /Write(multi use)
33	Total time for the designated trip	Read only

NOTE: Logger can be started by TIME / START button (immediate start or with delay) or with both options enabled. Please select these settings carefully

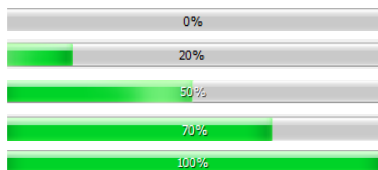


And hit PROGRAM icon

- g. A confirmation dialogue will appear for the final approval






- h. After acceptance bottom left corner progress bar will progress and display 100%.



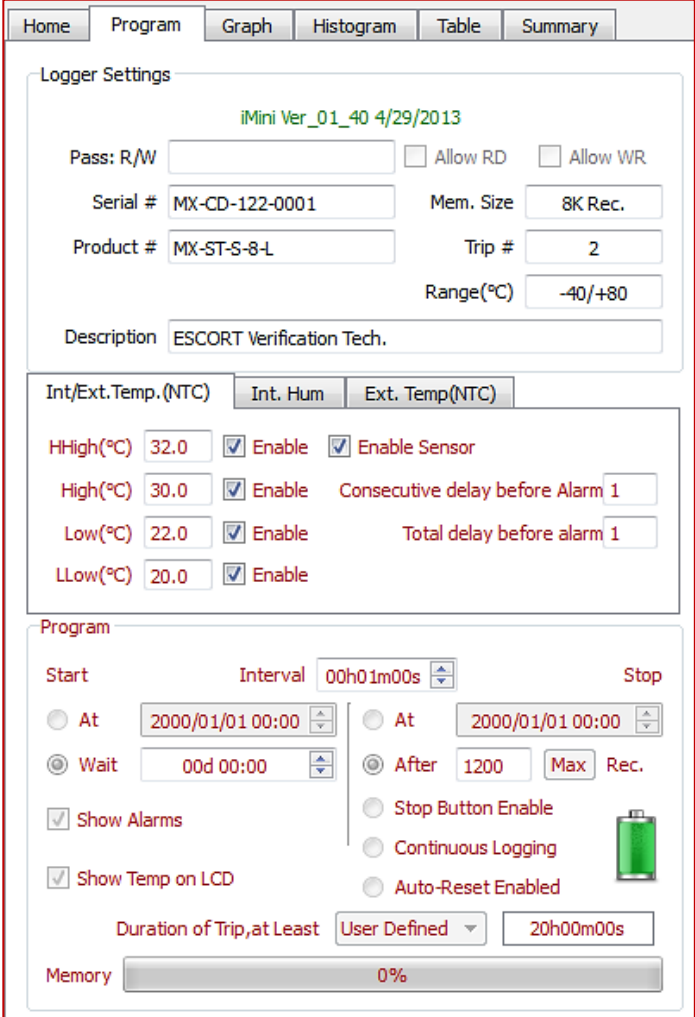
- i. 'READY' will be on the LCD display of iMINI

Logger is ready to start logging, according to settings (timer or button) logger will start measuring and recording the data.

# 11. Lock program settings

Adjust the necessary fields or program settings for the next trip, (user can lock these settings if more loggers need to be programmed automatically (when connected). By clicking icon , it will turn as  the locked fields will  highlighted in PROGRAM tab in RED font as shown

This function is only available for the same product; product code must be similar for the next logger to be auto-programmed



Home Program Graph Histogram Table Summary

Logger Settings

iMini Ver\_01\_40 4/29/2013

Pass: R/W   Allow RD  Allow WR

Serial #  Mem. Size

Product #  Trip #

Range(°C)

Description

Int/Ext.Temp.(NTC) Int. Hum Ext. Temp(NTC)

HHigh(°C)   Enable  Enable Sensor

High(°C)   Enable Consecutive delay before Alarm

Low(°C)   Enable Total delay before alarm

LLow(°C)   Enable


Program

Start Interval  Stop

At   At

Wait   After  Max Rec.

Show Alarms  Stop Button Enable

Show Temp on LCD  Continuous Logging 

Auto-Reset Enabled

Duration of Trip, at Least

Memory

# 12. Template (Save / Load)

Program settings of a Data Logger can be saved as template and be used for future.

Save Template Program: User can save template from a data file (CVT) or from a connected logger. File will be with extension \*.xtp and saved at default location

Load Template Program: User can use previously save template (extension \*.xtp). If loaded, program will fill all the settings in the fields and will be displayed in Red color fonts (as above). Program lock icon will be locked and program icon will be highlighted as soon as the logger is plugged in and can be programmed with these saved settings

# 13. Password protection

In password protection, from **one** to **eight** numbers can be assigned during program, no alphabets are accepted.

Pass: R/W   Allow RD  Allow WR

- Initially entire filed is blank and Allow RD / Allow WR are greyed out

Pass: R/W   Allow RD  Allow WR

- Allow RD / Allow WR will be available to select as soon as number is entered Pass R/W filed  
If none of the options, Allow RD / Allow WR is selected, user has to enter password to Program / Download data

Pass: R/W   Allow RD  Allow WR


- If Allow RD is selected during program, user can Download the data without password, but not be able to Program

Pass: R/W   Allow RD  Allow WR

- If Allow WR is selected during program, user can Program the logger without password, but not be able to Download the data

When logger is connected next time, ConsolePlus ask for a password depending on the option selected,



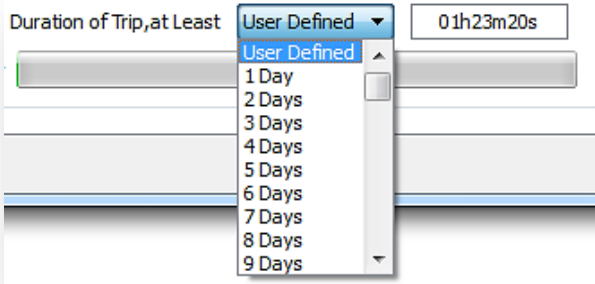
if **Allow RD** is selected during program, Read Without Password – READ button will be highlighted and clickable. After the click 'Download' button will be enabled and data can be downloaded manually by click  or if Auto Download' is enabled

if **Allow WR** is selected during program, Write Without Password – WRITE button will be highlighted and clickable. After the click 'Program' tab will be enabled

# 14. User defined settings

---


User can program the logger by selecting the list of pre-set no. of days from drop down list

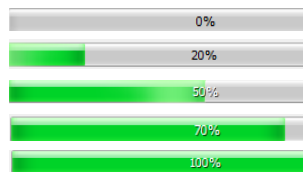


Settings of 1 day to 60 day are available. Program will use full memory of the logger and set the time interval between each reading accordingly

# 15. Download

---

- a. Plug iMINI into the USB mini port and run the USB port into an available USB slot on workstation.
- b. ConsolePlus will auto download (if checked in *options*)
- c. Or user can always force the software to download by clicking  icon

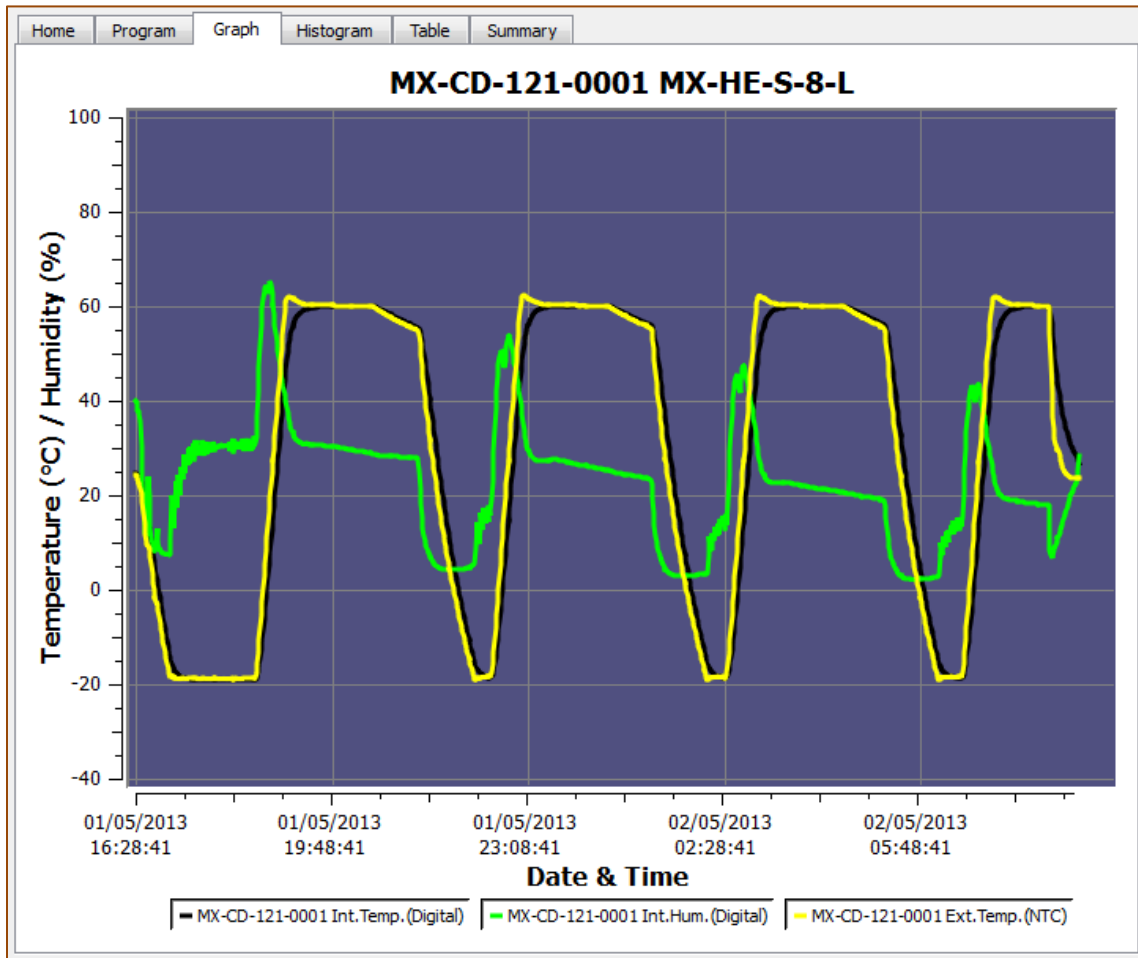


- d. A progress bar will appear (left bottom corner)
- e. Currently captured data or data of previous trip (if logger is displaying STOPPED) will be downloaded and will render the graph immediately of the data
- f. Download is also possible even if there is no data in the logger or new mission / trip has not started and device is displaying READY. In some events previous trip data is available.

This helps if logger is accidentally programmed and hasn't yet started, user has a chance to recover the data

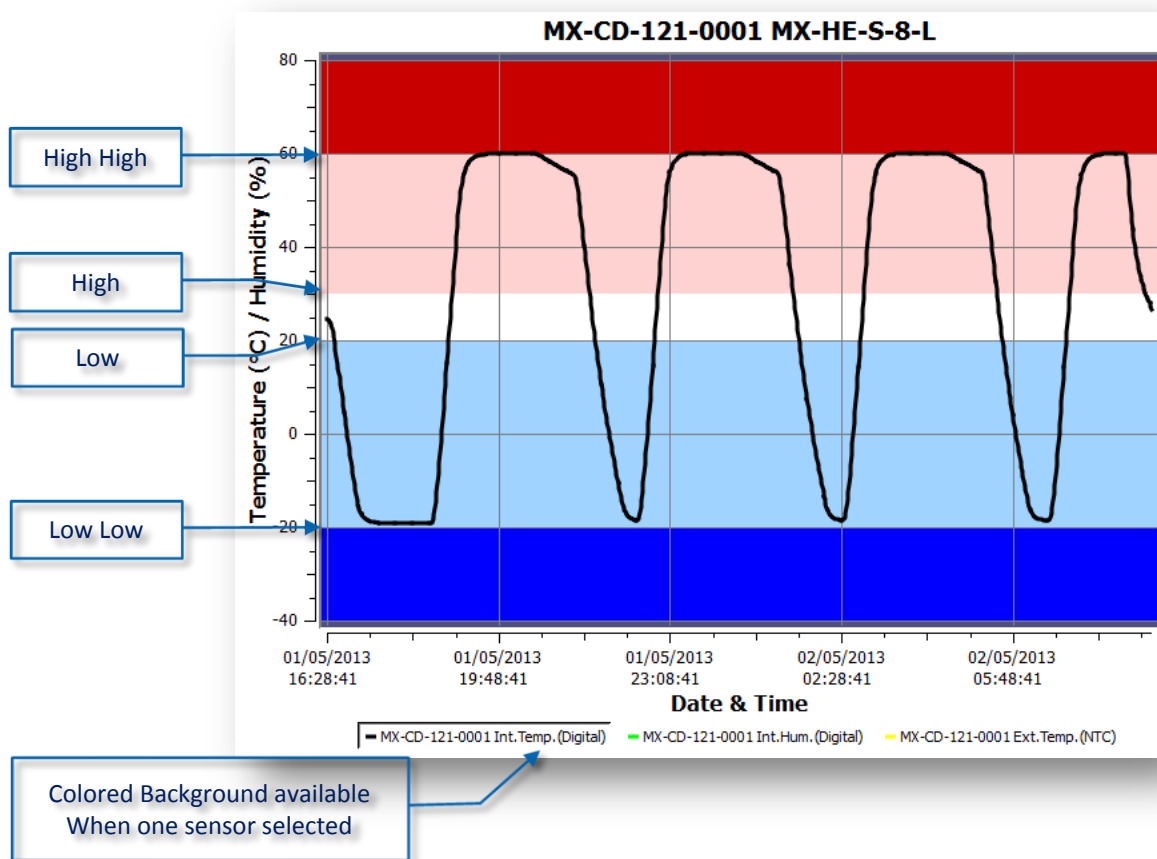
- g. Download option will be disabled if logger is password protected and Allow RD is disabled.

# 16. Graph



- Graph tab will auto open after a download or a previously saved file is open
- X-axis is always date & time axis
- Y-axis is Temperature or Temperature/Humidity (depending on the data logger type)
- If the logger is with one sensor, graph will display different colors in background at respective alarm range
- If the logger is multi-sensor, by default background is light blue (as above), settings can always be changed at any time  
Options → View Tab
- Graph Legend area has all the sensors available with respective information (S.No. & sensor)
- User can click each or any of these bullets to select / deselect that particular sensor in the graph.  
Graph will change accordingly in real time

- If only one sensor at a given time is selected, the background will display colors based on alarm conditions (HH, H, L, LL)




- **Mouse Zoom:**

User can select some area in graph and it will zoom to the range for closer look

- **Mouse Tool Tip:**

Hovering the mouse over the graph will show the reading no., time and data information in entire graph


## 17. Save/ save as

If AUTO SAVE is checked in options, the data file will be saved automatically in default folder or user can manually save the data from the icon  or from

MENU → File → Save/save as

**Save:** by default extension \*.CVT in default folder

**Save as:** user can choose extension from drop down list \*.CVT, \*.TXT, \*.CSV

Or as PDF file, by default (PDF icon ) saves in default directory



- Auto Save Logger
- Auto Generate TXT
- Auto Generate CSV
- Auto Generate PDF

Above options can be selected to 'auto save' different file types, this feature helps users to not to lose the data.

## 18. Auto-open PDF

---

ConsolePlus generates PDF automatically if selected in options → 'auto save PDF'.

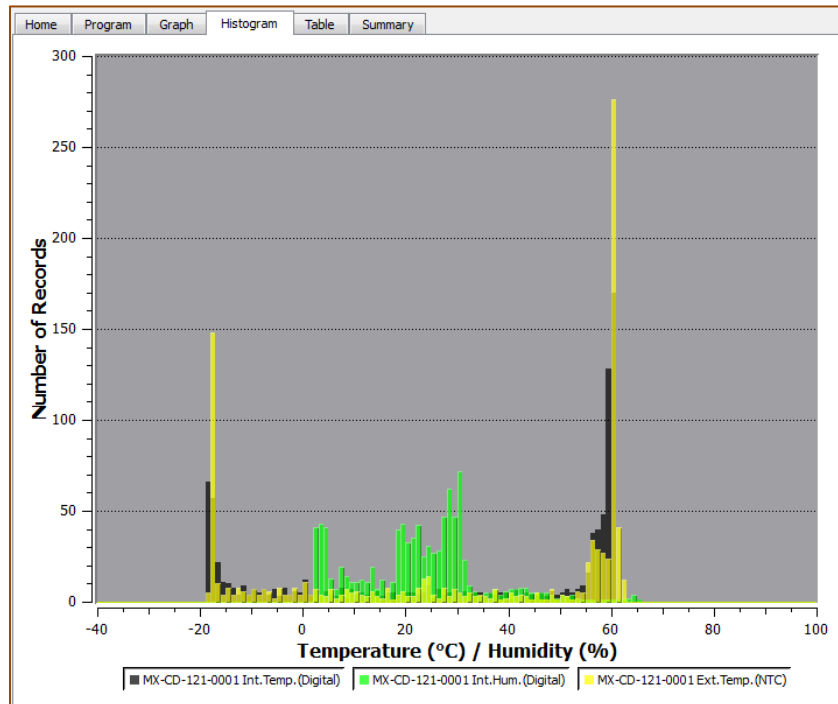
If the next option → 'auto open PDF' is enabled, generated PDF will open automatically as soon as the logger is connected and data is downloaded.

Adobe PDF applications must be installed on the computer. If Adobe PDF is not installed, user may receive a message during installation of ConsolePlus. If not installed, option → 'auto open PDF' will be permanently greyed out / disabled. Until the Adobe PDF is installed

## 19. Histogram

---

Analytical view of the data is displayed



# 20. Table

All the data from the logger (from START to FINISH of the current/last trip) can be viewed here. Scroll down to view all the data of the logger. Readings are in colored fonts according to alarm settings triggered to make them easier to understand and detect.

#	Elapsed	Time	intT°C	intH%	extT°C
12	00:01:50	02/05/2013 17:48:04	12.9	21.1	-18.9
13	00:02:00	02/05/2013 17:48:14	12.2	21.9	-19.7
14	00:02:10	02/05/2013 17:48:24	11.4	21.1	-20.4
15	00:02:20	02/05/2013 17:48:34	10.7	21.3	-21.0
16	00:02:30	02/05/2013 17:48:44	10.1	22.0	-21.4
17	00:02:40	02/05/2013 17:48:54	9.4	21.9	-21.6
18	00:02:50	02/05/2013 17:49:04	8.8	22.0	-22.1
19	00:03:00	02/05/2013 17:49:14	8.1	22.0	-22.4
20	00:03:10	02/05/2013 17:49:24	8.2	35.2	-0.1
21	00:03:20	02/05/2013 17:49:34	9.2	67.0	10.2
22	00:03:30	02/05/2013 17:49:44	10.0	78.6	65.7
23	00:03:40	02/05/2013 17:49:54	66.7	9.2	40.7
24	00:03:50	02/05/2013 17:50:04	74.3	8.8	23.8
25	00:04:00	02/05/2013 17:50:14	33.2	26.4	20.3
26	00:04:10	02/05/2013 17:50:24	24.2	39.3	19.5
27	00:04:20	02/05/2013 17:50:34	20.6	47.1	19.5
28	00:04:30	02/05/2013 17:50:44	18.7	52.8	
29	00:04:40	02/05/2013 17:50:54	17.6	56.6	
30	00:04:50	02/05/2013 17:51:04	16.9	58.8	
31	00:05:00	02/05/2013 17:51:14	16.5	60.1	20.5
32	00:05:10	02/05/2013 17:51:24	16.2	64.6	21.4
33	00:05:20	02/05/2013 17:51:34	16.3	69.2	21.3
34	00:05:30	02/05/2013 17:51:44	16.5	68.0	
35	00:05:40	02/05/2013 17:51:54	16.8	71.3	
36	00:05:50	02/05/2013 17:52:04	17.0	65.6	
37	00:06:00	02/05/2013 17:52:14	17.2	63.1	22.0
38	00:06:10	02/05/2013 17:52:24	17.4	61.7	22.1
39	00:06:20	02/05/2013 17:52:34	17.5	60.7	22.2
40	00:06:30	02/05/2013 17:52:44	25.1	92.7	24.3
41	00:06:40	02/05/2013 17:52:54	23.6	96.6	23.4
42	00:06:50	02/05/2013 17:53:04	22.6	97.6	23.0
43	00:07:00	02/05/2013 17:53:14	21.9	98.2	
			21.3	98.5	
			20.9	98.8	
			20.6	99.1	24.0
47	00:07:40	02/05/2013 17:53:54	20.3	99.2	23.9
48	00:07:50	02/05/2013 17:54:04	20.1	99.0	21.3

Below LOW LOW alarm  
Dark **Blue** color

Readings within specification  
**GREEN** color

Below HIGH alarm  
Light **RED** color

Above HIGH HIGH alarm  
Dark **RED** color

Below LOW alarm  
Light **BLUE** color

# 21. Summary

Detailed summary of the trip and basic information of the logger and all sensors can be viewed here

Basic Summary

Internal Temp (Digital)  
Or  
NTC (or Ext Left)  
(if not with Humidity sensor)

Internal Humidity (Digital)

External Temp NTC  
(Ext Right)  
1M Grey Cable

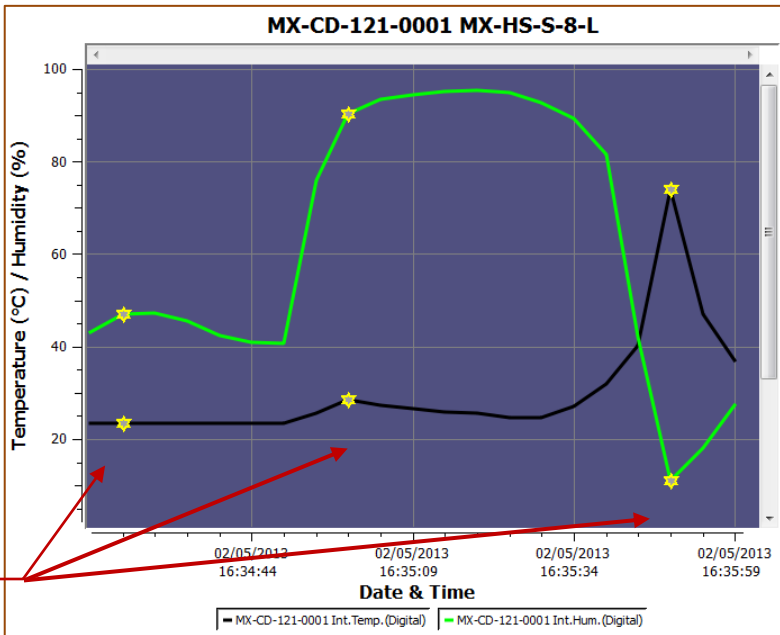
Home   Program   Graph   Histogram   Table   Summary	
Serial	MX-CD-092-3128
Product Code	MX-1H-S-128-L
Firmware Version	iMini Ver_01_29 27/03/2013
Memory size	128K Rec.
Temperature Range	-40/+80 (°C)
Humidity Range	0-100%
Trip #	3
Description	12345678901234567890123456789012
Unit mode Programmed	Celsius (°C)
Program: Start at:	-
Program: Start button after:	00d 00:00
Program: Stop at:	-
Program: Stop after # records:	130688
Program: Interval:	00h00m02s
Program: Continuous logging:	-
Program: Stop button enable:	Yes
Program: Auto-Restart Enable:	Yes
Program: Memory used:	8%
Number of Records:	10965
Started Time:	02/04/2013 12:54:07
Stopped Time:	02/04/2013 14:55:56
Int. Temp. Alarm HH	32.0 (°C)
Int. Temp. Alarm H	30.0 (°C)
Int. Temp. Alarm L	22.0 (°C)
Int. Temp. Alarm LL	20.0 (°C)
Int. Temp. Consecutive alarm delay	1
Int. Temp. Total alarm delay	1
Int. Temp. out of specification HH	00h00m00s
Int. Temp. out of specification H	00h00m00s
Int. Temp. out of specification L	00h00m00s
Int. Temp. out of specification LL	00h00m00s
Int. Temp. Value Max:	24.5 (°C)
Int. Temp. Value Avg:	24.0 (°C)
Int. Temp. Value Min:	23.4 (°C)
Int. Temp. MKT	24.0 (°C)
Int. Hum. Alarm HH	90.0 (%)
Int. Hum. Alarm H	80.0 (%)
Int. Hum. Alarm L	20.0 (%)
Int. Hum. Alarm LL	10.0 (%)
Int. Hum. Consecutive alarm delay	1
Int. Hum. Total alarm delay	1
Int. Hum. out of specification HH	00h00m00s
Int. Hum. out of specification H	00h00m00s
Int. Hum. out of specification L	00h00m00s
Int. Hum. out of specification LL	00h00m00s
Int. Hum. Value Max:	45.5%
Int. Hum. Value Avg:	21.1%
Int. Hum. Value Min:	20.1%
Int. Hum. MKT	-
Ext. Temp. Alarm HH	12.0 (°C)
Ext. Temp. Alarm H	8.0 (°C)
Ext. Temp. Alarm L	2.0 (°C)
Ext. Temp. Alarm LL	-2.0 (°C)
Ext. Temp. Consecutive alarm delay	2
Ext. Temp. Total alarm delay	3
Ext. Temp. out of specification HH	02h01m50s
Ext. Temp. out of specification H	00h00m00s
Ext. Temp. out of specification L	00h00m00s
Ext. Temp. out of specification LL	00h00m00s
Ext. Temp. Value Max:	46.3 (°C)
Ext. Temp. Value Avg:	30.9 (°C)
Ext. Temp. Value Min:	22.7 (°C)
Ext. Temp. MKT	30.6 (°C)

# 22. Bookmark

A Bookmark displays a MARKED reading, users can mark a reading during the logging by briefly holding START button on the logger for 3-5 seconds, MARKED text displayed on the LCD display of the logger screen for few seconds, and that reading is marked with time stamp

Once data is downloaded

**Graph view**, a STAR is placed at the time and reading



**Bookmarked readings**

**Table view**, bookmarked readings are highlighted with grey background

#	Elapsed	Time	intT°C	intH%
1	00:00:00	02/05/2013 16:34:19	23.4	43.2
2	00:00:05	02/05/2013 16:34:24	23.4	47.1
3	00:00:10	02/05/2013 16:34:29	23.4	47.2
4	00:00:15	02/05/2013 16:34:34	23.4	45.5
5	00:00:20	02/05/2013 16:34:39	23.4	42.3
6	00:00:25	02/05/2013 16:34:44	23.4	40.8
7	00:00:30	02/05/2013 16:34:49	23.4	40.7
8	00:00:35	02/05/2013 16:34:54	25.5	75.9
9	00:00:40	02/05/2013 16:34:59	28.6	90.2
10	00:00:45	02/05/2013 16:35:04	27.4	93.4
11	00:00:50	02/05/2013 16:35:09	26.5	94.5
12	00:00:55	02/05/2013 16:35:14	25.9	95.2
13	00:01:00	02/05/2013 16:35:19	25.5	95.5
14	00:01:05	02/05/2013 16:35:24	24.6	94.9
15	00:01:10	02/05/2013 16:35:29	24.6	92.8
16	00:01:15	02/05/2013 16:35:34	27.0	89.3
17	00:01:20	02/05/2013 16:35:39	31.8	81.6
18	00:01:25	02/05/2013 16:35:44	40.1	42.2
19	00:01:30	02/05/2013 16:35:49	74.0	10.9
20	00:01:35	02/05/2013 16:35:54	46.9	18.0
21	00:01:40	02/05/2013 16:35:59	36.9	27.4

**Bookmarked readings**

## 23. MKT

---

User can view Mean Kinetic Temperature; on summary tab.

**Mean kinetic temperature (MKT)** is a simplified way of expressing the overall effect of temperature fluctuations during storage or transit of perishable goods

Activation energy (typically within 60–100 kJ·mol<sup>-1</sup> for solids or liquids), ConsolePlus allow users to customize activation energy. This option is available in Options / settings on general tab

## 24. Multilink

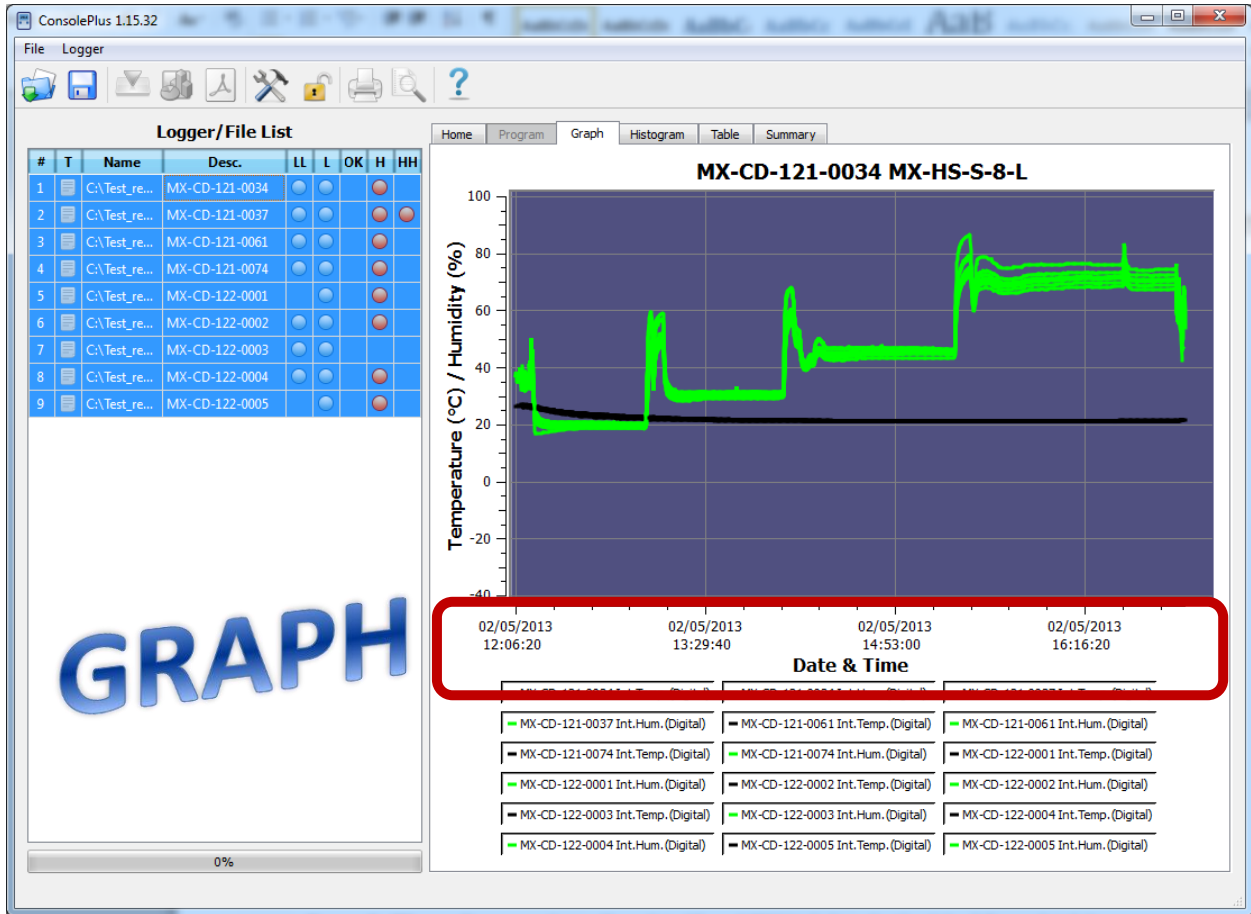
---

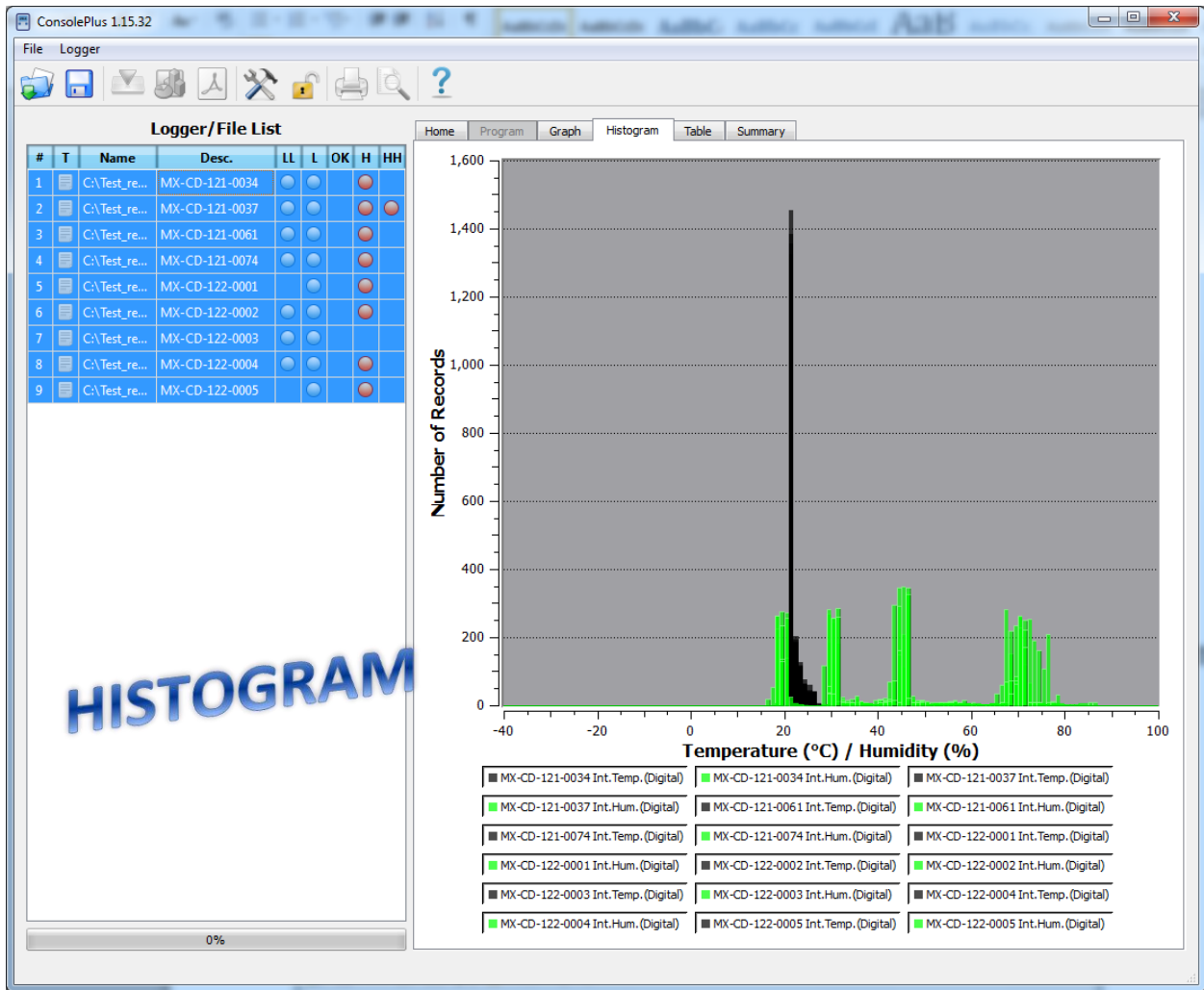
User is allowed to link multiple files (with extension CVT) by selecting with mouse or by pressing shift and selecting individual files. Compare the results with different options.

- I. Compare trip data based on actual date/time of each reading
- II. Compare trip data from different date/time period(s)

The linked files also can be saved into TXT and CSV format for further evaluation or to print. Data from multiple files also reflects in Graph, Histogram, Table and Summary

- I. Compare trip data based on actual date/time of each reading





ConsolePlus 1.15.32

File Logger

Logger/File List

#	T	Name	Desc.	LL	L	OK	H	HH
1		Ca\Test_re...	MX-CD-121-0034	●	●	●	●	●
2		Ca\Test_re...	MX-CD-121-0037	●	●	●	●	●
3		Ca\Test_re...	MX-CD-121-0061	●	●	●	●	●
4		Ca\Test_re...	MX-CD-121-0074	●	●	●	●	●
5		Ca\Test_re...	MX-CD-122-0001	●	●	●	●	●
6		Ca\Test_re...	MX-CD-122-0002	●	●	●	●	●
7		Ca\Test_re...	MX-CD-122-0003	●	●	●	●	●
8		Ca\Test_re...	MX-CD-122-0004	●	●	●	●	●
9		Ca\Test_re...	MX-CD-122-0005	●	●	●	●	●

0%

**TABLE**

#	Time	121-003	121-003	121-003	121-003	121-006	121-007	121-007	122-000	122-000	122-000	122-000	122-000	122-000	122-000	122-000
1695	02/05/2013 12:55:28	-	-	-	-	-	-	-	-	-	-	-	-	-	-	-
1696	02/05/2013 12:55:30	-	-	-	-	-	-	-	-	-	-	-	-	-	-	-
1697	02/05/2013 12:55:32	-	-	-	-	-	-	-	22.4	20.5	-	-	-	-	-	-
1698	02/05/2013 12:55:34	-	-	22.0	18.8	-	-	-	-	-	-	-	-	-	-	-
1699	02/05/2013 12:55:35	-	-	-	-	22.5	18.6	22.7	19.0	-	-	-	-	-	-	-
1700	02/05/2013 12:55:37	22.8	18.7	-	-	-	-	-	-	-	-	22.9	19.7	-	-	-
1701	02/05/2013 12:55:38	-	-	-	-	-	-	-	-	-	-	-	-	22.8	19.7	-
1702	02/05/2013 12:55:40	-	-	-	-	-	-	-	-	22.8	19.6	-	-	-	-	-
1703	02/05/2013 12:55:42	-	-	-	-	-	-	-	22.4	20.5	-	-	-	-	-	-
1704	02/05/2013 12:55:44	-	-	22.0	18.8	-	-	-	-	-	-	-	-	-	-	-
1705	02/05/2013 12:55:45	-	-	-	-	22.5	18.6	22.7	19.0	-	-	-	-	-	-	22.6
1706	02/05/2013 12:55:47	22.8	18.7	-	-	-	-	-	-	-	-	22.9	19.6	-	-	-
1707	02/05/2013 12:55:48	-	-	-	-	-	-	-	-	-	-	-	-	22.8	19.7	-
1708	02/05/2013 12:55:50	-	-	-	-	-	-	-	-	22.8	19.6	-	-	-	-	-
1709	02/05/2013 12:55:52	-	-	-	-	-	-	-	22.3	20.5	-	-	-	-	-	-
1710	02/05/2013 12:55:54	-	-	22.0	18.8	-	-	-	-	-	-	-	-	-	-	-
1711	02/05/2013 12:55:55	-	-	-	-	22.5	18.6	22.7	19.0	-	-	-	-	-	-	22.7
1712	02/05/2013 12:55:57	22.8	18.7	-	-	-	-	-	-	-	-	22.9	19.6	-	-	-
1713	02/05/2013 12:55:58	-	-	-	-	-	-	-	-	-	-	-	-	22.8	19.7	-
1714	02/05/2013 12:56:00	-	-	-	-	-	-	-	-	22.8	19.6	-	-	-	-	-
1715	02/05/2013 12:56:02	-	-	-	-	-	-	-	22.3	20.5	-	-	-	-	-	-
1716	02/05/2013 12:56:04	-	-	22.0	18.8	-	-	-	-	-	-	-	-	-	-	-
1717	02/05/2013 12:56:05	-	-	-	-	22.5	18.6	22.7	19.0	-	-	-	-	-	-	22.6
1718	02/05/2013 12:56:07	22.8	18.7	-	-	-	-	-	-	-	-	22.9	19.6	-	-	-
1719	02/05/2013 12:56:08	-	-	-	-	-	-	-	-	-	-	-	-	22.8	19.7	-
1720	02/05/2013 12:56:10	-	-	-	-	-	-	-	-	22.7	19.6	-	-	-	-	-
1721	02/05/2013 12:56:12	-	-	-	-	-	-	-	22.3	20.5	-	-	-	-	-	-
1722	02/05/2013 12:56:14	-	-	22.0	18.8	-	-	-	-	-	-	-	-	-	-	-
1723	02/05/2013 12:56:15	-	-	-	-	22.5	18.6	22.7	19.0	-	-	-	-	-	-	22.6
1724	02/05/2013 12:56:17	22.8	18.7	-	-	-	-	-	-	-	-	22.9	19.6	-	-	-
1725	02/05/2013 12:56:18	-	-	-	-	-	-	-	-	-	-	-	-	22.8	19.7	-
1726	02/05/2013 12:56:20	-	-	-	-	-	-	-	22.7	19.6	-	-	-	-	-	-
1727	02/05/2013 12:56:22	-	-	-	-	-	-	-	22.3	20.5	-	-	-	-	-	-
1728	02/05/2013 12:56:24	-	-	22.0	18.8	-	-	-	-	-	-	-	-	-	-	-
1729	02/05/2013 12:56:25	-	-	-	-	22.5	18.6	22.7	19.0	-	-	-	-	-	-	22.6
1730	02/05/2013 12:56:27	22.8	18.7	-	-	-	-	-	-	-	-	22.9	19.6	-	-	-
1731	02/05/2013 12:56:28	-	-	-	-	-	-	-	-	-	-	-	-	22.8	19.7	-
1732	02/05/2013 12:56:30	-	-	-	-	-	-	-	-	22.7	19.6	-	-	-	-	-
1733	02/05/2013 12:56:32	-	-	-	-	-	-	-	22.3	20.5	-	-	-	-	-	-

ConsolePlus 1.15.32

File Logger

Logger/File List

#	T	Name	Desc.	LL	L	OK	H	HH
1		Ca\Test_re...	MX-CD-121-0034	●	●	●	●	●
2		Ca\Test_re...	MX-CD-121-0037	●	●	●	●	●
3		Ca\Test_re...	MX-CD-121-0061	●	●	●	●	●
4		Ca\Test_re...	MX-CD-121-0074	●	●	●	●	●
5		Ca\Test_re...	MX-CD-122-0001	●	●	●	●	●
6		Ca\Test_re...	MX-CD-122-0002	●	●	●	●	●
7		Ca\Test_re...	MX-CD-122-0003	●	●	●	●	●
8		Ca\Test_re...	MX-CD-122-0004	●	●	●	●	●
9		Ca\Test_re...	MX-CD-122-0005	●	●	●	●	●

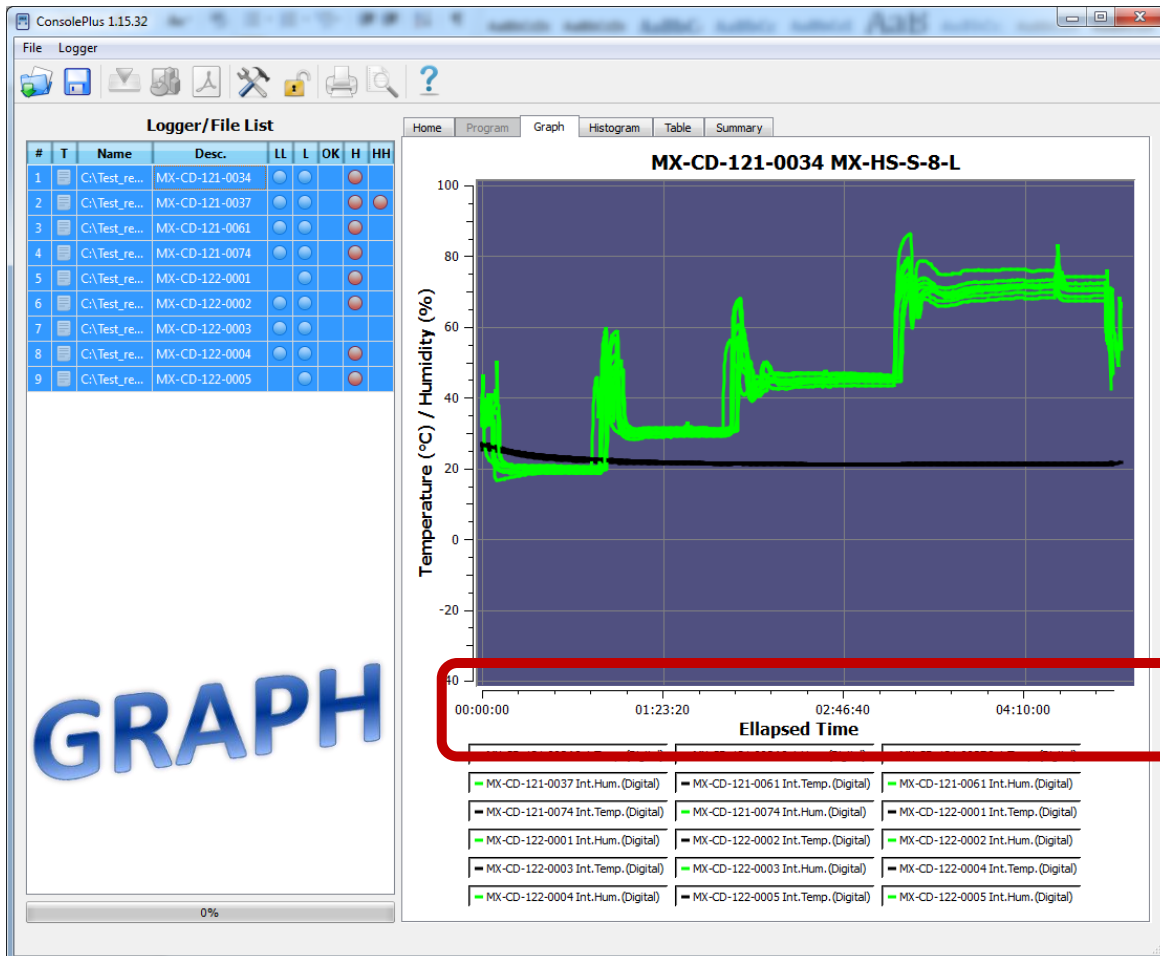
0%

**SUMMARY**

Serial	MX-CD-121-0034	MX-CD-121-0037	MX-CD-121-0061	MX-CD-121-0074	MX-CD-122-0001
Product Code	MX-HS-S-8-L	MX-HS-S-8-L	MX-HS-S-8-L	MX-HS-S-8-L	MX-HS-S-8-L
Firmware Version	Mini Ver_01_40 4/29/2013	Mini Ver_01_40 4/29/2013	Mini Ver_01_40 4/29/2013	Mini Ver_01_40 4/29/2013	Mini Ver_01_40 4/29/2013
Mem. Size	8K Rec.	8K Rec.	8K Rec.	8K Rec.	8K Rec.
Temperature / Humidity	-40/+80 (°C) 0-100%	-40/+80 (°C) 0-100%	-40/+80 (°C) 0-100%	-40/+80 (°C) 0-100%	-40/+80 (°C) 0-100%
Battery	High	High	High	High	High
Top #	2	2	2	2	1
Description	ESCORT Verification Tech.	ESCORT Verification Tech.	ESCORT Verification Tech.	ESCORT Verification Tech.	ESCORT Verification Tech.
Unit Mode Programmed	Celsius (°C)	Celsius (°C)	Celsius (°C)	Celsius (°C)	Celsius (°C)
Program: Start At:	-	-	-	-	-
Program: Start button after:	-	-	-	-	-
Program: Stop At:	-	-	-	-	-
Program: Stop after # records:	7808	7808	7808	7808	7514
Program: Interval:	00h00m10s	00h00m10s	00h00m10s	00h00m10s	00h00m10s
Program: Continuous Logging:	-	-	-	-	-
Program: Stop button enabled:	Yes	Yes	Yes	Yes	Yes
Program: Stop after # records:	Yes	Yes	Yes	Yes	Yes
Program: Memory Used:	44%	44%	44%	44%	44%
Number of Records	3480	3486	3484	3478	3478
Started Time:	02/05/2013 12:09:37	02/05/2013 12:08:44	02/05/2013 12:08:45	02/05/2013 12:09:35	02/05/2013 12:09:32
Stopped Time:	02/05/2013 16:59:32	02/05/2013 16:59:09	02/05/2013 16:59:00	02/05/2013 16:59:20	02/05/2013 16:59:17
Int. Temp. Alarm HH	80.0 (°C)	80.0 (°C)	80.0 (°C)	80.0 (°C)	80.0 (°C)
Int. Temp. Alarm H	30.0 (°C)	30.0 (°C)	30.0 (°C)	30.0 (°C)	30.0 (°C)
Int. Temp. Alarm L	20.0 (°C)	20.0 (°C)	20.0 (°C)	20.0 (°C)	20.0 (°C)
Int. Temp. Alarm LL	-20.0 (°C)	-20.0 (°C)	-20.0 (°C)	-20.0 (°C)	-20.0 (°C)
Int. Temp. Consecutive alarm delay	1	1	1	1	1
Int. Temp. Total alarm delay	1	1	1	1	1
Int. Temp. out of specification HH	00h00m00s	00h00m00s	00h00m00s	00h00m00s	00h00m00s
Int. Temp. out of specification H	00h00m00s	00h00m00s	00h00m00s	00h00m00s	00h00m00s
Int. Temp. out of specification L	00h00m00s	00h00m00s	00h00m00s	00h00m00s	00h00m00s
Int. Temp. out of specification LL	00h00m00s	00h00m00s	00h00m00s	00h00m00s	00h00m00s
Int. Temp. Value Max:	27.0 (°C)	27.0 (°C)	26.8 (°C)	26.7 (°C)	26.7 (°C)
Int. Temp. Value Avg:	21.9 (°C)	21.7 (°C)	21.8 (°C)	21.9 (°C)	21.7 (°C)
Int. Temp. Value Min:	21.2 (°C)	21.2 (°C)	21.2 (°C)	21.2 (°C)	21.1 (°C)
Int. Temp. MKT	21.9 (°C)	21.7 (°C)	21.8 (°C)	21.9 (°C)	21.7 (°C)
Int. Hum. Alarm HH	80.0 (%)	80.0 (%)	80.0 (%)	80.0 (%)	80.0 (%)
Int. Hum. Alarm H	60.0 (%)	60.0 (%)	60.0 (%)	60.0 (%)	60.0 (%)
Int. Hum. Alarm L	40.0 (%)	40.0 (%)	40.0 (%)	40.0 (%)	40.0 (%)
Int. Hum. Alarm LL	20.0 (%)	20.0 (%)	20.0 (%)	20.0 (%)	20.0 (%)

II. Compare trip data from different date/time period(s)





**MX-CD-121-0034 MX-HS-S-8-L**

#	T	Name	Desc.	LL	L	OK	H	HH
1		C:\Test_re...	MX-CD-121-0034					
2		C:\Test_re...	MX-CD-121-0037					
3		C:\Test_re...	MX-CD-121-0061					
4		C:\Test_re...	MX-CD-121-0074					
5		C:\Test_re...	MX-CD-122-0001					
6		C:\Test_re...	MX-CD-122-0002					
7		C:\Test_re...	MX-CD-122-0003					
8		C:\Test_re...	MX-CD-122-0004					
9		C:\Test_re...	MX-CD-122-0005					

#	Elapsed	121-003	121-003	121-003	121-006	121-006	121-007	121-007	122-000	122-000	122-000	122-000	122-000	122-000	122-000	122-000	122-000		
689	01:54:40	21.5	32.1	21.2	21.0	21.4	23.9	21.4	21.2	21.2	33.9	21.4	30.4	21.5	55.8	21.4	34.2	21.4	31.2
690	01:54:50	21.5	38.3	21.2	31.2	21.4	30.1	21.4	40.5	21.2	45.5	21.4	30.4	21.5	55.3	21.4	38.9	21.4	31.2
691	01:55:00	21.5	42.9	21.2	31.8	21.4	30.3	21.4	46.3	21.2	53.0	21.4	30.4	21.5	54.7	21.4	42.9	21.4	31.2
692	01:55:10	21.5	46.1	21.2	31.2	21.4	30.1	21.4	51.5	21.3	57.7	21.4	30.4	21.5	54.3	21.4	46.4	21.4	31.2
693	01:55:20	21.5	48.1	21.2	31.1	21.4	30.0	21.4	53.3	21.3	60.7	21.4	30.4	21.5	52.9	21.4	49.2	21.4	31.2
694	01:55:30	21.5	50.0	21.2	31.1	21.4	34.1	21.4	54.5	21.3	62.7	21.4	30.4	21.5	51.7	21.4	50.9	21.4	31.2
695	01:55:40	21.5	51.3	21.3	43.4	21.4	46.1	21.4	55.5	21.3	63.9	21.4	30.4	21.5	50.9	21.4	51.9	21.4	31.2
696	01:55:50	21.5	52.2	21.3	52.7	21.4	53.4	21.4	56.4	21.3	64.7	21.4	30.4	21.5	50.3	21.4	52.6	21.4	31.2
697	01:56:00	21.5	52.8	21.3	58.3	21.4	58.1	21.4	57.1	21.3	65.0	21.4	30.4	21.5	49.8	21.4	53.3	21.4	31.2
698	01:56:10	21.5	53.0	21.3	61.9	21.4	61.3	21.4	57.6	21.3	65.6	21.4	30.4	21.5	49.5	21.4	53.7	21.4	31.2
699	01:56:20	21.5	53.6	21.3	64.0	21.4	62.9	21.4	58.3	21.3	65.8	21.4	30.5	21.5	49.2	21.4	54.3	21.4	31.2
700	01:56:30	21.5	53.7	21.3	65.2	21.4	64.2	21.4	58.5	21.3	66.0	21.4	30.5	21.5	49.0	21.4	54.6	21.4	31.6
701	01:56:40	21.5	53.9	21.3	65.9	21.4	64.9	21.4	59.1	21.3	66.3	21.4	30.5	21.5	48.9	21.4	55.0	21.4	31.5
702	01:56:50	21.5	54.3	21.3	66.3	21.4	65.3	21.4	59.4	21.3	66.5	21.4	30.5	21.5	48.8	21.4	55.5	21.4	31.3
703	01:57:00	21.5	54.6	21.3	66.7	21.4	65.7	21.4	59.7	21.3	66.6	21.4	30.5	21.5	48.6	21.4	55.7	21.4	31.3
704	01:57:10	21.5	54.8	21.3	66.9	21.4	66.1	21.4	60.0	21.3	66.8	21.4	30.6	21.5	48.6	21.4	56.1	21.4	34.1
705	01:57:20	21.5	55.0	21.3	67.1	21.4	66.1	21.5	60.0	21.3	67.0	21.4	30.9	21.5	48.6	21.4	56.4	21.4	39.9
706	01:57:30	21.5	55.2	21.3	67.3	21.4	66.6	21.4	60.2	21.3	67.3	21.4	30.7	21.5	48.5	21.5	56.7	21.4	44.6
707	01:57:40	21.5	55.5	21.3	67.4	21.4	66.7	21.5	60.3	21.3	67.3	21.4	30.6	21.5	48.4	21.5	57.0	21.4	49.0
708	01:57:50	21.5	55.7	21.3	67.6	21.4	66.7	21.4	60.5	21.3	67.3	21.4	30.8	21.5	47.6	21.5	57.1	21.4	52.2
709	01:58:00	21.5	55.7	21.3	67.6	21.4	67.1	21.4	60.8	21.3	67.5	21.4	35.2	21.5	46.6	21.4	57.2	21.4	54.2
710	01:58:10	21.5	55.6	21.3	67.8	21.4	67.1	21.5	60.6	21.3	67.2	21.4	40.0	21.5	45.7	21.5	57.3	21.4	53.9
711	01:58:20	21.5	55.2	21.3	67.9	21.4	67.2	21.5	59.9	21.3	66.3	21.4	43.6	21.5	44.6	21.4	56.8	21.4	55.3
712	01:58:30	21.5	54.5	21.3	68.0	21.4	67.3	21.4	59.0	21.3	65.1	21.4	46.5	21.5	43.7	21.4	56.2	21.4	54.7
713	01:58:40	21.5	54.1	21.3	68.1	21.4	67.5	21.4	58.5	21.3	64.3	21.4	48.5	21.5	43.1	21.4	55.9	21.4	54.8
714	01:58:50	21.5	53.7	21.3	68.2	21.4	67.6	21.4	57.8	21.3	63.4	21.4	49.9	21.5	42.6	21.4	55.5	21.4	55.5
715	01:59:00	21.5	52.6	21.3	68.0	21.4	67.3	21.4	56.4	21.3	61.9	21.4	50.8	21.5	42.1	21.4	54.4	21.4	56.5
716	01:59:10	21.5	51.0	21.3	67.2	21.4	66.2	21.4	54.5	21.3	59.0	21.4	51.8	21.5	41.8	21.4	53.0	21.4	57.1
717	01:59:20	21.5	49.8	21.3	65.7	21.4	64.9	21.4	53.0	21.3	57.0	21.4	52.3	21.5	41.5	21.4	52.0	21.4	56.8
718	01:59:30	21.5	48.9	21.3	64.8	21.4	64.1	21.4	52.1	21.3	55.7	21.4	52.7	21.5	41.3	21.4	51.2	21.4	57.6
719	01:59:40	21.5	48.2	21.3	63.9	21.4	63.3	21.4	51.5	21.3	54.9	21.4	53.1	21.4	41.2	21.4	50.6	21.4	57.6
720	01:59:50	21.5	47.8	21.3	62.7	21.4	61.3	21.4	51.1	21.2	54.3	21.4	53.4	21.4	41.0	21.4	50.2	21.4	57.8
721	02:00:00	21.5	47.5	21.3	59.3	21.4	58.5	21.4	50.7	21.2	54.0	21.4	54.0	21.4	40.9	21.4	49.8	21.4	58.8
722	02:00:10	21.5	47.2	21.3	57.1	21.4	56.6	21.4	50.4	21.2	53.7	21.4	54.2	21.4	40.8	21.4	49.6	21.4	58.3
723	02:00:20	21.5	47.1	21.3	55.8	21.4	55.3	21.4	50.3	21.2	53.5	21.4	54.4	21.4	40.7	21.4	49.4	21.4	58.9
724	02:00:30	21.5	47.0	21.3	54.9	21.4	54.5	21.4	49.9	21.2	53.4	21.4	54.6	21.4	40.7	21.4	49.2	21.4	59.4
725	02:00:40	21.5	47.0	21.3	54.4	21.4	54.0	21.4	50.0	21.2	53.3	21.4	54.9	21.4	40.6	21.4	49.1	21.4	58.8
726	02:00:50	21.5	46.9	21.3	54.0	21.4	53.6	21.4	50.0	21.2	53.2	21.4	55.2	21.4	40.8	21.4	49.0	21.4	58.3
727	02:01:00	21.4	46.9	21.3	53.8	21.4	53.4	21.4	49.9	21.2	53.1	21.4	55.6	21.4	40.8	21.4	49.0	21.4	57.9

## 25. Battery Status

---

Logger's battery status is directly displayed on program tab. Software can detect the status and report with icon



OK battery



Low battery

If the data logger has low battery, low battery symbol is displayed on LCD of the data logger (if logger supports LCD)

## 26. Print / Print-preview

---

Print / Print-preview functions are available in ConsolePlus, when a file is open or logger is connected and downloaded. Available in main menu and icons are at the top of the application

## 27. Update

---

**ConsolePlus** software will check for updates automatically and will display a confirmation message when application is launched.

Also it can be easily updated manually from MENU tab, by selecting 'check for update'. So user need not to download a separate file all the time.

For more information about product and applications please contact [techsupport@escortdataloggers.com](mailto:techsupport@escortdataloggers.com)